

Bonhams



California Jewels

Los Angeles | March 5, 2019



California Jewels

Los Angeles | Tuesday March 5 , 2019, at 10am

BONHAMS

7601 West Sunset Blvd,
Los Angeles, CA 90046
bonhams.com

SALE

Tuesday March 5, 2019
Lots: 1-348

PREVIEW

Los Angeles
Friday March 1,
12pm to 5pm
Saturday March 2,
12pm to 5pm
Sunday March 3,
12pm to 5pm
Monday March 4,
12pm to 5pm

SALE NUMBER:

25328

CATALOG:

\$35.00

ILLUSTRATIONS

Front cover: Lot 80, 309
Inside front cover: Lot 20
Inside back cover: Lot 3
Back cover: Lot 167

BIDS

+1 (323) 850 7500
+1 (323) 850 6090 fax
Email: bids.us@bonhams.com
To bid via the internet please visit
www.bonhams.com

Telephone bidding

Bidding by telephone will only be accepted on a lot with a low estimate in excess of \$1000.

Please note that bids should be submitted no later than 4pm on the day prior to the sale. New bidders must also provide proof of identity when submitting bids. Failure to do this may result in your bid not being processed.

Live online bidding is available for this sale

Please email bids@bonhams.com with 'live bidding' in the subject line 48 hours before the auction to register for this service.

INQUIRIES

Los Angeles

Dana Ehrman, GG
Director, LA Jewelry
Alexis Vourvoulis, GG
Emily Waterfall
Kelly Sitek, GG

ADMINISTRATOR

Alexandra Schettini
alexandra.schettini@bonhams.com
+1 (323) 436 5424

Jean Ghika

Global Head of Jewelry
jean.ghika@bonhams.com
+44 207 468 8282

New York:

Brett O'Connor, Senior
International Jewelry Director
Caroline Morrissey,
Head of Sales, US Jewelry
Camille Barbier, GG
+1 212 461 6526

San Francisco:

Shannon Beck, GG
Senior Specialist
+1 (415) 503 3306

CLIENT SERVICES

Monday to Friday 9am-5pm
+1 (323) 850 7500
+1 (323) 850 6090 Fax

Please see pages 105 to 107 for bidder information including Conditions of Sale, after-sale collection and shipment.

Please note that irrespective of origin, jadeite and rubies (and any jewelry pieces that contain them) may now be imported into the United States.

REGISTRATION IMPORTANT NOTICE

Please note that all customers, irrespective of any previous activity with Bonhams, are required to complete the Bidder Registration Form in advance of the sale. The form can be found at the back of every catalogue and on our website at www.bonhams.com and should be returned by email or post to the specialist department or to the bids department at bids.us@bonhams.com

To bid live online and / or leave internet bids please go to www.bonhams.com/auctions/25328 and click on the Register to bid link at the top left of the page.

IMPORTANT NAMES & NOTICES

DIAMONDS, COLORED STONES & PEARLS

The Jewelry department of Bonhams & Butterfields recognizes that there are many various forms of treatments and enhancements used in diamonds and colored stones in order to improve their appearance and or color. Techniques such as heat treatment have been used to improve the color and transparency of both sapphires and rubies in addition to other gemstones. Techniques such as oiling have been used to enhance the clarity of emeralds while dying has been used to effect the color of jade. Techniques such as heat treatment, oiling, resin impregnation, irradiation, color diffusion, dying, fracture filling, and HTHP are just a few off the techniques that are in use today. Prospective buyers are therefore reminded that unless otherwise noted in our catalog description it must be assumed that some form of enhancement may have been used and that such treatment may not always be permanent or detectable and that our estimates have taken such possibilities into account. As a matter of policy, Bonhams & Butterfields endeavors to obtain certificates from recognized gemological laboratories when such certificates are deemed crucial to the authenticity of a gemstone. It is not possible however to gain certificates for all items offered for sale and it is therefore recommended where there is no mention of a certificate that all prospective buyers consult with one of our department specialists prior to purchase of such items.

PLEASE NOTE: A number of laboratories issue certificates that give more detailed descriptions of gemstones, however there may not be consensus between different laboratories on the degrees, or types of treatment for any particular gemstone. Neither is there necessarily consensus between different laboratories, or private appraisers, on the grading of diamonds. All gemstone weights are approximations only and although an independent laboratory grading may be used in the catalog text, we cannot guarantee such gradings.

Images shown may appear smaller or larger than actual size.

Although we endeavor to mention in our descriptions significant defects, needed repairs, absent stones and the like, **WE DO NOT GUARANTEE THAT THE DESCRIPTIONS ARE COMPREHENSIVE.** Please examine all lots carefully. It is the responsibility of the prospective bidder, or his agent, to determine the condition of lots during the preview. Condition reports have been created for most lots in this auction, and are available upon request. Please contact the Jewelry department at least two days prior to the sale date for additional information.

It is the responsibility of the buyer to investigate any applicable restrictions on purchased property and to obtain any export or import licenses and/or certificates as well as any other required documentation before shipping. The buyer's inability to export or import any such items or to do so timely shall not serve as the basis for any cancellation or rescission of the sale or any delay in payment. Prospective buyers who are uncertain as to whether a lot is subject to these restrictions or any other restrictions on importation or exportation are advised to consult with the specialist department in which the property is offered.

REGULATED SPECIES MATERIALS AND CITES PERMITS

The export of a lot from the United States or import into certain countries may be subject to export or import regulations, licensure and/or other restrictions; in particular, lots containing plant or animal materials such as ivory, rhinoceros horn, tortoiseshell, coral, whalebone or certain types of woods, irrespective of age or value, may require the granting of one or more export or import licenses or certificates, or may be banned from import altogether by some countries. Moreover, the ability to obtain an export license or certificate does not insure the ability to obtain an import license or certificate in another country. Lots that contain such regulated species materials may also not be eligible for exportation or for re-importation into the United States if they are not at least 100 years of age, and, under current law, lots containing African Elephant Ivory may no longer be re-imported into the United States regardless of age. In addition, resales of lots containing certain regulated species materials may be subject to restrictions in some jurisdictions.

Lots noted in the catalog with a **Y** next to the lot number contain one or more such regulated plant or animal materials. **It is the buyer's responsibility to investigate any such restrictions and to obtain any relevant export or import licenses. Please note that this process is governed by local authorities and may take considerable time. Regardless of any delay in the obtaining of an export or import license or certificate or denial of a license's or certificate's issuance, purchased lots shall be paid for in accordance with the Conditions of Sale, and any such delay or denial shall not serve as the basis for cancellation of any sale.** Prospective buyers are advised to obtain information from the relevant regulatory authorities regarding export and import restrictions, requirements, and costs prior to bidding.

Prospective buyers should also check with their local (e.g. state) regulatory authorities regarding any local restrictions and/or permit requirements that may apply with respect to purchases of regulated species materials, including without limitation purchases of items containing elephant ivory or rhino horn. For example, we are advised that New York buyers of any lot containing elephant or mammoth ivory or rhino horn will be responsible for obtaining a New York State permit before taking possession of the lot within New York State, and that the State of New Jersey has banned the import of items containing elephant or marine mammal ivory or rhino horn into that state.

Upon request, Bonhams can refer the purchaser to a third party agent to assist the purchaser in attempting to obtain the appropriate licenses and/or certificates. However, there is no assurance that any necessary licenses or certificates can be obtained. Please contact the Specialist Department for a suggested list of shipping agents prior to placing a bid if you are uncertain as to whether a lot is subject to export/import license or certificate requirements or related restrictions.

WATCHES

Although we endeavor to mention in our descriptions significant defects, needed repairs, absent stones and the like, **WE DO NOT GUARANTEE THAT THE DESCRIPTIONS ARE COMPREHENSIVE.** Please examine all watches carefully. It is the responsibility of the prospective bidder, or his agent, to determine the condition of watches during the preview. Except as expressly set forth in the Conditions of Sale, all watches are sold "as is". We do not guarantee the accuracy or operation of any watch function such as timekeeping, chronograph, calendar, repeater or register.

We make no judgments as to whether diamond dials or diamond bezels originated at the factory or are later additions.

INDEX

INCLUDING PROPERTY FROM

NAME	LOT NUMBER	
Buccellati	166, 167	Property from a San Francisco Family
Bulgari	13, 148	Property from the Estate of Patrick Henry Jr.
Carrera Y Carrera	337	Property of a Lady
Cartier	12, 21, 23, 24, 25, 340	Property from a Private Texas Collection
Chanel	184	All Proceeds of the Sale to Benefit the Charity TotalCourage
Charles Krypell	317	Property from the Estate of a Colorado Artist
Charles Vaillant	18	Property from the Estate of a Los Angeles Lady
Chaumet	22	
Corum	335	
David Webb	19, 328	
Elizabeth Gage	27	
Graff	45	
Henry Dunay	140	
Hermés	149, 150, 171A	
Ilias LaLaounis	7	
Jacob & Co.	32	
Kieselstein Cord	186	
Masriera	341, 342, 343, 344, 345, 346, 348	
Mikimoto	298	
Patricia Schepps Vaill of Seaman Schepps	188	
Piaget	28	
Rolex	175	
Theodore B. Starr	104	
Tiffany & Co.	206, 297	
Tremonti	265	
Van Cleef & Arpels	143, 309	



328





6



7

**1
A PAIR OF DIAMOND AND 14K GOLD
EAR PENDANTS**

two radiant-cut diamonds weighing: 1.65cts and 1.68cts; *length: 1in.*

\$5,000 - 8,000

**2
A DIAMOND, 18K GOLD AND PLATINUM
RING**

estimated total diamond weight: 1.60cts; size: 6 3/4

\$1,800 - 2,500

**3
AN EMERALD AND GOLD BEAD
NECKLACE**

emerald beads approximately: 6.4 to 20.6mm; *length: 30in.*

\$2,500 - 3,500

**4
AN EMERALD AND 18K GOLD RING**

centering a cut-cornered rectangular step-cut emerald approximately: 8.77 x 6.45 x 4.72mm; *size: 6 1/4*

\$2,000 - 3,000

**5
A DIAMOND AND 18K GOLD RING**

round brilliant-cut diamond weighing:

2.35cts; *size: 3 3/4 (with sizing beads)*

\$5,000 - 7,000

**6
A PAIR OF CHRYSOPRASE, DIAMOND
AND 18K GOLD EAR PENDANTS**

dimensions: 3 x 1 7/16in.

\$1,500 - 2,000

**7
AN 18K GOLD BRACELET, ILIAS
LALAOUNIS, GREEK**

signed Ilias Lalaounis with maker's mark; weighing approximately: 58 grams; length: 7 3/8in., width: 1 1/2in.

\$2,500 - 3,500



8

8^Y
A DIAMOND AND GEM-SET 14K GOLD HINGED CUFF

gross weight approximately: 113 grams; diameter: 2 3/4in., width: 1 3/8in.

\$3,000 - 5,000



9

9^Y
A CORAL, PEARL AND 14K GOLD TORSADE

coral beads approximately: 3.2 to 3.6mm; length: 16 3/4in.

\$1,800 - 2,500
To be sold without reserve

10^Y
A CORAL, DIAMOND AND 18K GOLD RING AND EAR CLIP SET

estimated total diamond weight: 1.40cts; ear clip length: 1 in., ring size: 7 3/4

\$2,500 - 3,500
To be sold without reserve



11
A DIAMOND AND 18K GOLD RING
*estimated total diamond weight: 4.00cts;
 size: 4*

\$1,800 - 2,500

12
**A DIAMOND AND 18K BI-COLOR GOLD
 'RUMBA' COLLAR, CARTIER**
*signed Cartier, no. 728085; estimated total
 diamond weight: 1.45cts; gross weight
 approximately: 54 grams; length: 30in.*

\$6,000 - 8,000

13
**A PAIR OF AMETHYST AND 18K GOLD
 'TUBOGAS' EAR CLIPS, BULGARI**
signed Bulgari, no. BA 739; length: 1in.

\$1,800 - 2,500

14
**A DIAMOND, PLATINUM AND 18K GOLD
 RING**
total diamond weight: 1.93cts; size: 6 1/2

\$1,800 - 2,500



15



16



18



17

15
A RUBY, DIAMOND AND 18K GOLD RING
oval brilliant step-cut ruby approximately:
9.40 x 7.77 x 3.62mm; *estimated total
diamond weight: 1.00ct; size: 7*

\$6,000 - 8,000

Accompanied by GIA report #2185878209 dated November 27, 2017, stating the ruby as: Natural, Burmese origin, minor heat enhancement.

16
AN EMERALD, DIAMOND, 18K GOLD AND PLATINUM RING
estimated total diamond weight: 2.45cts; size: 6 3/4

\$2,000 - 3,000

17
A DIAMOND AND 18K BI-COLOR GOLD BRACELET
estimated total diamond weight: 2.15cts; gross weight approximately: 58 grams; length: 7 3/4in.

\$3,000 - 5,000

18
A DIAMOND, GEM-SET GOLD AND PLATINUM 'BIRD OF PARADISE' CLIP, CHARLES VAILLANT
signed C. Vaillant; estimated total diamond weight: 2.05cts; gross weight approximately: 46 grams; dimensions: 3 1/2 x 2in.

\$3,000 - 5,000

A skilled craftsman and jeweler, Charles Vaillant opened his first jewelry workshop in New York City in 1920. He quickly caught the attention of several high-end jewelry houses with his skill for metalwork and attention to detail, soon cultivating a strong relationship with Duke Fulco di Verdura. Most notably was his work in the 1950s with the firm Alemany & Ertman who he collaborated with to produce jewels for the surrealist artist Salvador Dali.



19



20



22



21

19
A PAIR OF ENAMEL AND 18K GOLD CUFFLINKS, DAVID WEBB
signed WEBB; gross weight approximately: 26 grams; diameter: 1 in.

\$2,500 - 3,500

20
A DIAMOND AND 18K GOLD BRACELET
estimated total diamond weight: 25.00cts; gross weight approximately: 74 grams; length: 7 1/4 in.

\$25,000 - 35,000

PROPERTY FROM A SAN FRANCISCO FAMILY

21
A SET OF DIAMOND, AMETHYST, PLATINUM AND 18K GOLD SHIRT STUDS, CARTIER, PARIS
signed Cartier, Paris, no. 1394; with French assay marks; accompanied by a fitted box; length: 7/16 in.

\$2,000 - 3,000

PROPERTY FROM VARIOUS OWNERS

22
A DIAMOND AND 18K GOLD BAND, CHAUMET, PARIS
signed Chaumet, with French assay marks, no. 174999; size: 7

\$1,000 - 1,500
To be sold without reserve



23

24

25

23
**AN 18K GOLD 'BAMBOO' COLLAR,
CARTIER, FRENCH**
*signed Cartier, no. 644052, with French
assay and maker's marks; with signed box;
weighing approximately: 119 grams; length:
19in.*

\$5,000 - 7,000

24
**AN 18K GOLD 'BAMBOO' CUFF,
CARTIER, FRENCH**
*signed Cartier, no. 652673 with French assay
marks; weighing approximately: 52 grams;
diameter: 2 5/16in.*

\$3,000 - 5,000

25
**A PAIR OF 18K GOLD 'BAMBOO' EAR
CLIPS, CARTIER, FRENCH**
*signed Cartier, no. 674310, with French
assay and maker's marks; weighing
approximately: 25 grams; length: 1 3/8in.*

\$2,000 - 3,000





26



27



29



28

PROPERTY FROM THE ESTATE OF PATRICK HENRY JR.

**26
A COLORED SAPPHIRE, DIAMOND AND PLATINUM RING**

cushion modified mixed-cut yellow sapphire approximately: 13.55cts; *estimated total diamond weight: 1.25cts; size 5 1/2*

\$10,000 - 15,000

Accompanied by AGL report # 1094036, dated July 26, 2018, stating the yellow sapphire as: Ceylon (Sri Lankan) origin, no indications of heat or clarity enhancement.

PROPERTY FROM VARIOUS OWNERS

**27
A SAPPHIRE, COLORED SAPPHIRE AND 18K BI-COLOR GOLD RING, ELIZABETH GAGE, LONDON, 2010**

oval mixed-cut sapphire weighing: 2.54cts; *signed Gage, with maker's mark and English hallmarks; size: 4 3/4*

\$3,000 - 5,000

Accompanied by AGL report #1084618 dated May 19, 2017, stating the sapphire as: Natural, Thai origin, no indications of heat enhancement.

**28
AN 18K GOLD CONCEALED DIAL INTEGRAL BRACELET WRISTWATCH, PIAGET**

back wind; no. 1010 N 41, 107747; case width: 9mm; gross weight approximately: 125 grams; length: 7 1/2in.

\$3,500 - 4,500

**29
A PAIR OF DIAMOND AND 18K GOLD 'MINI JET SET' EARRINGS**

attributed to Ippolita; unsigned; gross weight approximately: 16 grams; length: 3 1/4in.

\$1,000 - 1,500

To be sold without reserve



30



31



32



33

**30
A PAIR OF DIAMOND, RUBY, 18K ROSE
AND WHITE GOLD 'PRIMAVERA' FLEX
BRACELETS**

attributed to Roberto Coin, *unsigned*; with
signed pouches; gross weight approximately:
26 grams; diameter: 2 1/4in.

\$1,200 - 1,800
To be sold without reserve

**31
A DIAMOND AND PLATINUM RING**

round brilliant-cut diamond weighing:
1.75cts; size: 9 1/2

\$6,000 - 8,000

Accompanied by GIA report #5192817612
dated November 9, 2018, stating the
diamond as: D color, SI1 clarity.

**32
A DIAMOND AND 18K WHITE GOLD
BRACELET, JACOB & CO.**

signed Jacob & Co.; total diamond weight:
10.50cts; gross weight approximately: 56
grams; length: 8 1/2in.

\$5,000 - 7,000

**33
A PAIR OF CHRYSOPRASE, LAPIS
LAZULI, DIAMOND AND 18K BI-COLOR
GOLD EAR PENDANTS**

length: 2 5/8in.

\$1,200 - 1,500



34

34

A PAIR OF OPAL, DIAMOND AND BI-COLOR GOLD EAR CLIPS

estimated total diamond weight: 1.30cts; dimensions: 3/4 x 1/2in.

\$1,200 - 1,800

To be sold without reserve

35

A CHALCEDONY, SAPPHIRE AND BLACKENED 18K WHITE RING

oval cabochon chalcedony approximately: 24.90 x 22.87 x 10.25mm; size: 7

\$2,000 - 3,000

37

38

36

36

A DOUBLE STRAND OPAL AND RHODIUM PLATED 14K WHITE GOLD NECKLACE

opal beads approximately: 2.9 to 9.6mm; lengths: 18 1/2in. and 19 3/4in.

\$1,500 - 2,500

To be sold without reserve

PROPERTY OF A LADY

37

A COLORED DIAMOND, DIAMOND AND 18K WHITE GOLD RING

total diamond weight: 1.88cts; size: 5 1/2 (yellow diamonds untested for origin of color)

\$2,000 - 3,000

38

A SAPPHIRE, DIAMOND AND BI-COLOR GOLD RING

cushion mixed-cut sapphire approximately: 11.15 x 8.53 x 6.92mm; estimated total diamond weight: 1.10cts; size: 6 1/4

\$2,500 - 3,500



39



40



41



42



43

PROPERTY FROM VARIOUS OWNERS

39
**A SAPPHIRE, SPESSARTITE GARNET,
SEMI-BLACK OPAL, DIAMOND AND
WHITE GOLD PENDANT**

length: 1 3/4in.

\$2,500 - 3,500
To be sold without reserve

40
**A SAPPHIRE, DIAMOND AND PLATINUM
RING**

cushion brilliant step-cut sapphire weighing:
3.39cts; *size: 7 1/4*

\$2,000 - 3,000

Accompanied by GIA report #2181270095
dated April 7, 2017, stating the sapphire as:
Natural, with heat enhancement.

41
**A JADEITE BEAD NECKLACE WITH
DIAMOND AND 18K WHITE GOLD
CLASP**

jadeite beads approximately: 7.4 to 9.4mm;
length: 26in.

\$2,500 - 3,500
To be sold without reserve

Accompanied by Mason Kay report
#190122-6752 dated January 22, 2019,
stating: Natural Jadeite Jade-No Dye or
polymer detected-'A' Jade.

42
**A DIAMOND AND GEM-SET 18K WHITE
GOLD RING**

size: 6 1/4

\$2,000 - 3,000

43
**A PAIR OF JADEITE BEAD, DIAMOND
AND WHITE GOLD EARRINGS**

jadeite beads approximately: 12.2mm;
length: 1in.

\$1,500 - 2,000
To be sold without reserve



44
**A DIAMOND, EMERALD AND PLATINUM
 ETERNITY BAND**

*estimated total diamond weight: 3.45cts;
 size: 7*

\$2,000 - 3,000

45
**A SAPPHIRE AND WHITE GOLD
 ETERNITY BAND, GRAFF**

signed Graff, no. 19608; size: 6 3/4

\$2,000 - 3,000

46
**AN EMERALD, DIAMOND AND
 PLATINUM NECKLACE**

*total diamond weight: 6.18cts; gross weight
 approximately: 49 grams; length: 17in.*

\$6,000 - 8,000

47
**A PAIR OF DIAMOND AND 18K WHITE
 GOLD HOOP EARRINGS**

*estimated total diamond weight: 4.40cts;
 diameter: 1 5/8in.*

\$2,000 - 3,000

48
**A RUBY, DIAMOND AND PLATINUM
 RING**

*oval mixed-cut ruby weighing: 1.96cts; total
 diamond weight: 2.93cts; size: 8 1/2*

\$3,500 - 4,500



49



50



51



54



52



53

**49
A DIAMOND AND 18K WHITE GOLD
STAR OF DAVID PENDANT ON DIAMOND
18K WHITE GOLD CHAIN**

*estimated total diamond weight: 1.75cts;
length: 17 1/8in.*

\$2,500 - 3,500

**50
A RUBY, DIAMOND AND PLATINUM
RING/PENDANT**

*pear brilliant-cut ruby approximately: 8.86 x
6.69 x 2.97mm; signed Ring-dant; size: 5 3/4*

**\$2,500 - 3,500
To be sold without reserve**

**51
A DIAMOND AND RHODIUM PLATED
18K WHITE GOLD LONG CHAIN**

*estimated total diamond weight: 9.90cts;
length: 59in.*

\$3,500 - 4,500

**52
A RUBY, DIAMOND AND PLATINUM
RING**

*oval brilliant step-cut ruby weighing: 1.49cts;
size: 7*

\$2,000 - 3,000

*Accompanied by GIA report #2191089772
dated February 15, 2018, stating the ruby as:
Natural, no indications of heat enhancement.*

**53
A DIAMOND, EMERALD AND PLATINUM
RING**

*estimated total diamond weight: 1.45cts;
size: 6 3/4*

\$1,800 - 2,500

**54
A PAIR OF DIAMOND AND 18K WHITE
GOLD STUD EARRINGS**

diameter: 1/4in.

\$1,800 - 2,200



55



58



59



56



60

57

55
A PAIR OF COLORED DIAMOND AND BI-COLOR GOLD EAR PENDANTS

estimated total diamond weight: 2.45cts; length: 2in. (pink and yellow diamonds untested for origin of color)

\$3,000 - 5,000

56
A DIAMOND, COLORED DIAMOND AND 18K TRI-COLOR GOLD RING

total diamond weight: 2.10cts; size: 5 (orange and yellow diamonds untested for origin of color)

\$1,500 - 2,500
 To be sold without reserve

57
AN OPAL, YELLOW SAPPHIRE, DIAMOND AND 14K BI-COLOR GOLD BRACELET

length: 7 1/2in.

\$1,500 - 2,500
 To be sold without reserve

58
A PAIR OF COLORED DIAMOND, DIAMOND AND RHODIUM PLATED WHITE GOLD EAR STUDS

estimated total diamond weight: 2.40cts; diameter: 3/8in. (pink diamonds untested for origin of color)

\$5,000 - 8,000

59
A COLORED DIAMOND AND RHODIUM PLATED 18K WHITE GOLD RING

pear brilliant-cut yellow diamond approximately: 1.20cts; size: 6 3/4 (yellow diamond untested for origin of color)

\$1,500 - 2,500
 To be sold without reserve

60
A PAIR OF COLORED DIAMOND, DIAMOND, 18K GOLD AND PLATINUM EAR PENDANTS

estimated total diamond weight: 3.40cts; length: 2 1/8in. (yellow diamond untested for origin of color)

\$3,000 - 5,000



61



65



62



63



64

61
A PAIR OF DIAMOND, COLORED DIAMOND, 18K ROSE GOLD AND PLATINUM EAR CLIPS
estimated total diamond weight: 1.85cts; dimensions: 1 1/8 x 1/4in. (pink diamonds untested for origin of color)

\$1,800 - 2,500

62
A DIAMOND AND RHODIUM PLATED 18K WHITE GOLD COILED RING
estimated total diamond weight: 2.15cts; size: 6

\$1,800 - 2,500

63
A DIAMOND, COLORED DIAMOND, 18K ROSE GOLD AND PLATINUM NECKLACE
estimated total diamond weight: 2.55cts; length: 19 3/4in. (pink diamonds untested for origin of color)

\$1,500 - 2,500

64
A PAIR OF COLORED DIAMOND AND BI-COLOR GOLD EAR PENDANTS
estimated total diamond weight: 1.95cts; dimensions: 1 1/2 x 7/8in. (pink and yellow diamonds untested for origin of color)

\$2,000 - 4,000

65
A DIAMOND, COLORED DIAMOND, 18K ROSE GOLD AND PLATINUM RING
estimated total diamond weight: 2.10cts; size: 6 1/2 (pink diamonds untested for origin of color)

\$1,500 - 2,500



70



71



66



68



69



67





72



73



74

66
A DIAMOND AND 18K ROSE GOLD EXPANDABLE BANGLE

estimated total diamond weight: 3.40cts; gross weight approximately: 44 grams; diameter: 2 1/2in.

\$2,000 - 3,000

67
A PAIR OF DIAMOND AND 18K ROSE GOLD EARRINGS

estimated total diamond weight: 4.90cts; dimensions: 1 1/4 x 1 1/4in.

\$2,000 - 3,000

68
A SPINEL, DIAMOND AND 18K GOLD LONG CHAIN

length: 52in.

\$3,000 - 5,000

69
A PAIR OF DIAMOND AND 18K ROSE GOLD EAR STUDS

estimated total diamond weight: 2.00cts; diameter: 7/16 x 3/8in.

\$1,500 - 2,500

70
A ROSE QUARTZ, PINK SAPPHIRE AND 18K ROSE GOLD RING

oval cabochon rose quartz approximately: 25.06 x 22.88 x 10.43mm; size: 7

\$1,800 - 2,200

71
A PAIR OF ROSE QUARTZ, DIAMOND, COLORED DIAMOND, BLACKENED GOLD AND 18K ROSE GOLD EAR PENDANTS

estimated total diamond weight: 1.75cts; length: 2 7/8in. (brown diamonds untested for origin of color)

\$2,500 - 3,500

72
A PAIR OF DIAMOND AND 18K ROSE GOLD HOOP EARRINGS

estimated total diamond weight: 8.40cts; diameter: 1 3/4in.

\$3,000 - 5,000

73
A DIAMOND AND GEM-SET 18K ROSE GOLD PANTHER BANGLE

total diamond weight: 18.83cts; gross weight approximately: 42 grams; diameter: 2 1/2in.

\$6,000 - 8,000

74
A MORGANITE, DIAMOND AND 14K ROSE GOLD PENDANT

pear brilliant-cut morganite weighing: 35.52cts; total diamond weight: 1.37cts; length: 20in.

\$3,500 - 4,500



75



76



77



79



78

75
A DIAMOND AND 18K ROSE GOLD CROSSOVER RING
estimated total diamond weight: 2.65cts; size: 8

\$3,000 - 4,000

76
A PAIR OF DIAMOND AND 18K ROSE GOLD HOOP EARRINGS
length: 2 7/8in.

\$1,500 - 2,000

77
A DIAMOND, RUBY AND 18K ROSE GOLD NECKLACE
estimated total diamond weight: 3.00cts; length: 17in.

\$5,000 - 8,000

78
A PAIR OF DIAMOND AND 18K ROSE GOLD TASSEL EAR PENDANTS
length: 3 1/2in.

\$1,500 - 2,500

79
A DIAMOND AND 18K ROSE GOLD KINETIC RING
size: 6 1/4

\$2,500 - 3,500



80

82

81

80
A MULTI-COLOR TOURMALINE AND 14K GOLD RIVIÈRE, BEN KHO
signed Ben Kho; length: 18in.

\$1,500 - 2,500
To be sold without reserve

81
A COLORED DIAMOND AND 18K GOLD BAND
*estimated total diamond weight: 1.30cts;
size: 5 (yellow diamonds untested for origin of color)*

\$1,500 - 2,500
To be sold without reserve

82
A PINK SAPPHIRE AND 18K ROSE GOLD BAND
size: 6

\$1,200 - 1,800
To be sold without reserve



83



85



84



83

A RUBY, DIAMOND AND BI-COLOR GOLD RING

oval cabochon ruby approximately: 10.14 x 8.55 x 4.02mm; size: 7 1/2

\$1,500 - 2,000

84

AN OPAL, DIAMOND, RUBY, PLIQUE-À-JOUR ENAMEL, SILVER AND 18K GOLD BROOCH

gross weight approximately: 43 grams; dimensions: 3 1/4 x 2 3/8in.

\$2,000 - 3,000
To be sold without reserve

85

TWO DIAMOND, ENAMEL AND GEM-SET GOLD EN TREMBLANT BROOCHES

both signed S. Rudle, one with fitted box; dimensions: 1 3/4 x 1 1/2in. and 2 1/2 x 2 3/4in.

\$4,000 - 6,000





86

86
A MID-CENTURY DIAMOND AND PLATINUM DOUBLE CLIP BROOCH, CIRCA 1950

estimated total diamond weight: 9.85cts; gross weight approximately: 39 grams; dimensions: 2 5/8 x 2in.

\$3,000 - 5,000



87

87
A DIAMOND AND PLATINUM BRACELET

estimated total diamond weight: 9.70cts; gross weight approximately: 46 grams; length: 7in.

\$4,000 - 6,000

88
A DIAMOND AND RHODIUM PLATED 14K GOLD PENDANT AND BRACELET

estimated total diamond weight: 5.20cts; pendant dimensions: 1 1/4 x 7/8in., bracelet length: 6in.

\$2,000 - 4,000

88

89
A CAT'S-EYE CHRYSOBERYL, DIAMOND AND PLATINUM RING

round cabochon cats-eye chrysoberyl weighing: 7.60cts; total diamond weight: 1.55cts; size: 6 3/4

\$2,000 - 3,000

90
No lot



91

**91
A PAIR OF EMERALD, DIAMOND AND
18K WHITE GOLD EAR PENDANTS**

*estimated total diamond weight: 1.00ct;
length: 2 1/4in.*

\$1,500 - 2,000
To be sold without reserve



93

94

92

**92
A CULTURED PEARL, DIAMOND AND
14K WHITE GOLD NECKLACE**

*pearls approximately: 6.1mm to 10.0mm;
marquise brilliant-cut diamond approximately:
1.90cts; length: 23 1/4in.*

\$3,000 - 5,000

**93
AN EMERALD, DIAMOND AND 18K
WHITE GOLD NECKLACE**

*pear brilliant-cut emerald weighing: 2.40cts;
estimated total diamond weight: 2.30cts;
length: 18 5/8in.*

\$1,500 - 2,500
To be sold without reserve

**94
A PAIR OF DIAMOND AND RHODIUM
PLATED WHITE GOLD EAR PENDANTS**

*estimated total diamond weight: 8.30cts;
dimensions: 3 3/8 x 1in.*

\$6,000 - 8,000



95



97



96

95
A DIAMOND AND PLATINUM RING
round brilliant-cut diamond approximately:
1.00ct; size: 7

\$3,000 - 5,000

96
A PEARL, DIAMOND AND SILVER-TOPPED GOLD COLLAR
pearls approximately: 3.0 to 3.5mm; length:
12 1/4in.

\$2,500 - 3,500

97
A DIAMOND AND PLATINUM CLIP
estimated total diamond weight: 4.00cts;
dimensions: 2 1/2 x 2in.

\$2,500 - 3,500

98
A MID-CENTURY DIAMOND AND PLATINUM DOUBLE-CLIP BROOCH, CIRCA 1950
estimated total diamond weight: 7.50cts;
gross weight approximately: 36 grams;
dimensions: 2 1/2 x 2in.

\$4,000 - 6,000

99
A PAIR OF CULTURED PEARL, DIAMOND AND 14K WHITE GOLD EAR PENDANTS
pearls approximately: 3.2mm; length: 2 1/2in.

\$1,800 - 2,500

100
A JADEITE, DIAMOND, GOLD AND PLATINUM NECKLACE AND EAR PENDANTS
jadeite beads approximately: 4.9 to 9.0mm;
estimated total diamond weight: 1.50cts;
necklace length: 27in., earring length: 1 3/4in.

\$3,000 - 5,000

Accompanied by Mason Kay reports #181109-379 and #181109-6765, dated November 9, 2018, stating: Natural Jadeite Jade-No Dye or polymer detected-'A' Jade.

101
A JADEITE, DIAMOND AND WHITE GOLD RING
round cabochon jadeite approximately: 8.23 x 7.94 x 4.57mm; size: 5 3/4

\$3,000 - 5,000

Accompanied by Mason Kay report #181109-458 dated November 9, 2018, stating: Natural Jadeite Jade-No Dye or polymer detected-'A'Jade.



99



100



98



101





102



103



104



105

102
A DIAMOND, SILVER AND GOLD RING
size: 5

\$2,000 - 3,000

103
**A PAIR OF 19TH CENTURY DIAMOND,
SILVER AND GOLD EARRINGS,
RUSSIAN, CIRCA 1850**
with Russian assay marks; length: 1in.

\$2,000 - 3,000

104
**A TURN OF THE CENTURY STAR
SAPPHIRE, STAR RUBY AND GOLD
BROOCH, THEODORE B. STARR, CIRCA
1900**

signed T.B. Starr; gross weight
approximately: 27 grams; dimensions: 1 3/8
x 2 1/4in.

\$3,000 - 5,000

105
**A SEED PEARL, DIAMOND AND
PLATINUM TOPPED-GOLD BRACELET**
length: 7 1/2in., width: 1in.

\$1,500 - 2,500



106



107



108



109

106
A SAPPHIRE, DIAMOND AND 14K BI-COLOR GOLD NECKLACE

oval double cabochon sapphire
approximately: 7.78 x 6.93 x 5.47mm;
estimated total diamond weight: 1.45cts;
length: 19 1/4in.

\$3,000 - 5,000

108
A PAIR OF SAPPHIRE, DIAMOND AND RHODIUM PLATED 18K WHITE GOLD CUFFLINKS

dimensions: 5/8 x 3/4in.

\$1,000 - 1,500
To be sold without reserve

109
A LATE 19TH CENTURY DIAMOND AND SILVER-TOPPED GOLD PENDANT, CIRCA 1890

estimated total diamond weight: 2.00cts;
dimensions: 1 3/4 x 1 1/2in.

\$2,000 - 3,000

107
A DIAMOND, PLATINUM AND GOLD BROOCH

centering an old European-cut diamond
approximately: 1.00ct; estimated total
remaining diamond weight: 2.40cts;
dimensions: 3 x 5/8in.

\$3,000 - 6,000



110



111



112



113

110
A PAIR OF DIAMOND AND 18K WHITE GOLD EAR PENDANTS
no. 2551; estimated total diamond weight: 1.70cts; length: 1 1/2in.
\$1,800 - 2,500

112
A DIAMOND AND PLATINUM BRACELET
estimated total diamond weight: 10.05cts; gross weight approximately: 54 grams; length: 7 1/2in.
\$5,000 - 7,000

113
AN ART DECO DIAMOND, BLACK ONYX AND PLATINUM BROOCH, CIRCA 1925
estimated total diamond weight: 4.00cts; dimensions: 2 x 1in.
\$2,000 - 3,000

111
AN EMERALD, DIAMOND AND PLATINUM LINE BRACELET
no. 899; estimated total diamond weight: 1.95cts; length: 7in.
\$2,500 - 3,500



114



115



116



117

114
A PAIR OF DIAMOND, RUBY AND PLATINUM EAR PENDANTS

two round brilliant-cut diamonds
approximately: 1.50cts and 1.50cts; *length:*
1 9/16in.

\$4,000 - 6,000

116
AN EMERALD, DIAMOND AND PLATINUM RING

cushion mixed-cut emerald approximately:
8.05 x 7.48 x 4.13mm; *size:* 6

\$2,500 - 3,500

117
A PAIR OF DIAMOND, RUBY AND PLATINUM EAR PENDANTS

two round brilliant-cut diamonds
approximately: 1.30cts and 1.40cts; *length:*
1 1/4in.

\$3,500 - 4,500

115
A DIAMOND, EMERALD AND PLATINUM BRACELET

estimated total diamond weight: 6.40cts;
gross weight approximately: 58 grams;
length: 7 1/2

\$5,000 - 7,000



120



121



119



118



122

118
AN EARLY 20TH CENTURY DIAMOND AND PLATINUM BROOCH, CIRCA 1915
estimated total diamond weight: 4.10cts; diameter: 1 3/8in.

\$3,000 - 5,000

119
A PEARL, DIAMOND AND PLATINUM NECKLACE
pearls approximately: 2.15 to 5.05mm; length: 20in.

\$1,000 - 1,500

120
A DIAMOND AND PLATINUM RING
round brilliant-cut diamond approximately: 3.15cts; size: 5 1/2

\$5,000 - 7,000

121
A COLLECTION OF THREE ART DECO DIAMOND AND GEM-SET PLATINUM CHARMS, CIRCA 1930
lengths: 1/2in. to 1in.

\$1,500 - 2,000
To be sold without reserve

122
AN ART DECO DIAMOND AND PLATINUM DOUBLE CLIP BROOCH, CIRCA 1930
estimated total diamond weight: 8.00cts; gross weight approximately: 25 grams; dimensions: 2 1/4 x 1 3/8in.

\$3,000 - 5,000





125

126

124

127

123

128

123
A SAPPHIRE, DIAMOND AND WHITE GOLD RING
estimated total diamond weight: 1.00ct; size: 8 3/4

\$1,500 - 2,000
 To be sold without reserve

124
A SAPPHIRE AND RHODIUM PLATED 18K WHITE GOLD STARFISH NECKLACE
length: 19 3/4in.

\$1,200 - 1,500

125
A DIAMOND, EMERALD AND PLATINUM RING
cut-cornered rectangular step-cut emerald weighing: 0.75ct; total diamond weight: 1.00ct; size: 5 1/2

\$1,800 - 2,500
 To be sold without reserve

126
A PAIR OF TSAVORITE GARNET, DIAMOND AND BLACKENED 18K GOLD EARRINGS
diameter: 1/2in.

\$1,800 - 2,200

127
A SAPPHIRE, DIAMOND AND PLATINUM RING
oval mixed-cut sapphire approximately: 9.36 x 7.87 x 4.92mm; total diamond weight: 1.21cts; size: 5 3/4

\$2,500 - 3,500

128
A DIAMOND AND RHODIUM PLATED 18K WHITE GOLD BRACELET
estimated total diamond weight: 5.10cts; length: 7 1/4in.

\$2,000 - 3,000



129



130



131



133



132

129
**A PAIR OF TSAVORITE GARNET,
SAPPHIRE AND TITANIUM EARRINGS**
dimensions: 7/8 x 7/8in.

\$3,500 - 4,500

130
**A DIAMOND, SAPPHIRE AND PLATINUM
RING**
center round brilliant-cut diamond
approximately: 2.80cts; size: 6 1/2

\$10,000 - 15,000

131
A DIAMOND AND PLATINUM BRACELET
*estimated total diamond weight: 9.60cts;
gross weight approximately: 40 grams;
length: 7 1/8in.*

\$6,000 - 8,000

132
**AN EMERALD, DIAMOND AND 18K
WHITE GOLD RING, LONDON, 2001**
oval brilliant mixed-cut emerald
approximately: 10.74 x 8.43 x 5.59mm; *with
English hallmarks; total diamond weight:
1.14cts; size: 7*

\$1,500 - 2,000
To be sold without reserve

133
**A SAPPHIRE, DIAMOND AND 18K WHITE
GOLD RING**
*estimated total diamond weight: 2.15cts;
size: 6 3/4*

\$4,000 - 8,000



134



138



136



135



137

**134
A SAPPHIRE, DIAMOND AND PLATINUM RING**

oval brilliant step-cut sapphire weighing: 5.75cts; size: 7

\$5,500 - 6,500

Accompanied by GIA report #5172679209 dated June 17, 2016, stating the sapphire as: Natural, no indications of heat enhancement.

**135
A DIAMOND, SAPPHIRE AND PLATINUM FLOWER CLIP**

estimated total diamond weight: 12.00cts; gross weight approximately: 48 grams; dimensions: 2 1/4 x 2 1/4in.

\$12,000 - 18,000

**136
A RUBY, DIAMOND AND RHODIUM PLATED 18K WHITE GOLD RING, ITALIAN**

oval brilliant-cut ruby approximately: 7.00 x 5.43 x 3.73mm; *signed Italy*; size: 5 1/2

**\$2,000 - 3,000
To be sold without reserve**

**137
A PAIR OF TANZANITE, DIAMOND AND RHODIUM PLATED 18K WHITE GOLD EAR PENDANTS**

estimated total diamond weight: 8.60cts; dimensions: 2 3/4 x 1 5/16in.

\$5,000 - 7,000

**138
A PAIR OF RUBY, DIAMOND AND 18K WHITE GOLD EAR CLIPS**

dimensions: 1 x 7/8in.

\$2,500 - 3,500



139



141



142

140



**139
A TANZANITE, DIAMOND AND PLATINUM RING**

cut-cornered rectangular step-cut tanzanite approximately: 12.54 x 9.88 x 6.36mm; total diamond weight: 2.02cts; size: 6 1/4

\$4,000 - 6,000

**141
A RUBY, DIAMOND AND PLATINUM RING**

oval brilliant step-cut ruby measures: 9.04 x 7.90 x 4.13mm; no. L35346; estimated total diamond weight: 2.75cts; size: 6 1/4

\$3,000 - 5,000

**142
A SAPPHIRE, DIAMOND AND 18K WHITE GOLD RING**

oval mixed-cut sapphire approximately: 7.45cts; estimated total diamond weight: 2.90cts; size: 5 3/4

\$7,000 - 10,000

**140
A DIAMOND AND PLATINUM 'BAMBOO' NECKLACE AND BRACELET SET, HENRY DUNAY**

signed Henry Dunay, no. B5918 and no. B4962; estimated total diamond weight: 3.35cts; gross weight approximately: 121 grams; necklace length: 15 1/2in., bracelet length: 7in.

\$5,000 - 7,000

Accompanied by GIA report #5192685042 October 8, 2018, stating the ruby as: Natural, Burmese origin, no indications of heat enhancement.



143



145



144



146

143
A PAIR OF MABÉ PEARL, PEARL, DIAMOND AND WHITE GOLD EAR CLIPS, VAN CLEEF & ARPELS
pearls approximately: 10.14 to 17.1mm; signed VCA, no. 31903; estimated total diamond weight: 1.70cts; length: 1 5/8in.

\$3,000 - 5,000

145
A CULTURED PEARL, DIAMOND AND PLATINUM RING, FRENCH
pearl approximately: 13.3mm; with French assay and maker's marks; estimated total diamond weight: 2.85cts; size: 5

\$2,000 - 3,000

146
A DIAMOND AND 18K WHITE GOLD CUFF
estimated total diamond weight: 8.00cts; gross weight approximately: 101 grams; diameter: 2 1/4in., width: 2 1/2in.

\$4,000 - 6,000

144
A PAIR OF DIAMOND AND 18K WHITE GOLD EAR PENDANTS
estimated total diamond weight: 1.00ct; length: 1 7/8in.

\$1,800 - 2,500



147



149



148



150

147

**A DIAMOND AND RHODIUM PLATED
18K WHITE GOLD HINGED BANGLE**
*estimated total diamond weight: 2.10cts;
diameter: 2 5/16in.*

\$2,000 - 3,000

148

**A PAIR OF BLACK ONYX AND RHODIUM
PLATED 18K WHITE GOLD 'PYRAMID'
EAR CLIPS, BULGARI**
*signed Bulgari; gross weight approximately:
31 grams; dimensions: 1 x 1in.*

\$1,800 - 2,500

149

**A DIAMOND AND STAINLESS STEEL
"HEURE H" STRAP WRISTWATCH,
HERMÈS**

*quartz movement, case, dial and movement
signed; case no. HH1 530, 2959310; case
width: 29mm, length: 8 1/4in.*

\$1,500 - 2,000

150

**A STAINLESS STEEL 'ARCEAU' STRAP
WRISTWATCH WITH DATE, HERMÈS**

*automatic movement, case, dial and
movement signed; case no. AR7.710
2956075; case width: 39mm*

\$800 - 1,200

To be sold without reserve



151

152



153



154

151
A DIAMOND AND 14K GOLD NECKLACE
*estimated total diamond weight: 7.00cts;
length: 15 1/2in.*

\$2,000 - 3,000

152
AN EMERALD, DIAMOND AND PLATINUM RING
*oval cabochon emerald weighing: 8.40cts;
size: 7 1/2*

\$3,000 - 5,000

Accompanied by GIA report #1196751700 dated October 25, 2018, stating the emerald as: Natural, Colombian origin, clarity enhancement (F2).

153
A DIAMOND, RHODIUM PLATED GOLD AND GOLD NECKLACE AND RING SET
*two center round brilliant-cut diamonds approximately: 3.50cts and 1.70cts;
estimated total remaining diamond weight: 2.80cts; necklace length: 18in., ring size: 6*

\$6,000 - 8,000

154
A PAIR OF DIAMOND, PLATINUM AND WHITE GOLD BROOCHES
*estimated total diamond weight: 2.00cts;
dimensions: 1 1/8 x 7/8in.*

\$1,500 - 2,500
To be sold without reserve



155

156

157

PROPERTY FROM A PRIVATE TEXAS COLLECTION

**155
AN EMERALD, DIAMOND, CULTURED PEARL AND GOLD COLLAR**

oval cabochon emerald approximately: 26.00 x 24.95 x 10.89mm; pearls approximately: 5.3 to 6.8mm; *estimated total diamond weight: 3.35cts; length: 16in.*

\$3,000 - 5,000

PROPERTY FROM VARIOUS OWNERS

**156
A PAIR OF TURQUOISE, DIAMOND AND BI-COLOR GOLD EAR CLIPS AND RING SET, CIRCA 1960**

ear clip dimensions: 1 1/8 x 1/2in., ring size: 2 1/2

**\$1,500 - 2,500
To be sold without reserve**

**157
A DIAMOND AND PLATINUM BROOCH**

centering a transitional round brilliant-cut diamond approximately: 2.40cts; *estimated remaining diamond weight: 2.00cts; dimensions: 1 3/4 x 1 1/8in.*

\$5,000 - 7,000



158

159

160

158
A GEM-SET 14K GOLD CHARM NECKLACE

gross weight approximately: 131 grams; length: 20 1/4in.

\$3,500 - 4,500

159
A DIAMOND AND BI-COLOR GOLD RING

estimated total diamond weight: 4.95cts; size: 8 1/2

\$1,800 - 2,200

160
A SAPPHIRE, DIAMOND AND 18K GOLD RING

round brilliant-cut sapphire approximately: 7.80 x 7.93 x 5.60mm; estimated total diamond weight: 3.00cts; size: 6 3/4

\$1,500 - 2,000
To be sold without reserve



161

161
**A PAIR OF 18K GOLD EAR CLIPS WITH
 THREE PAIRS OF INTERCHANGEABLE
 HARDSTONE DOORKNOCKER EAR
 PENDANTS**

dimensions: 2 1/2 x 1 1/2in. and 2 x 1in.

\$1,500 - 2,000
 To be sold without reserve



162

162
**A TIGER'S-EYE QUARTZ, DIAMOND AND
 18K GOLD RING**

*estimated total diamond weight: 1.95cts;
 size: 5 3/4*

\$1,800 - 2,500



163

163
**A TURQUOISE, DIAMOND AND 14K
 GOLD SUITE**

*estimated total diamond weight: 3.35cts;
 pendant dimensions: 1 1/2 x 1 1/8in; chain
 length: 17 7/8in; ear clip dimensions: 3/4 x
 1/2in; ring size: 5 1/2*

\$1,500 - 2,500
 To be sold without reserve



164

165



166



167



168



169

164

A SAPPHIRE AND 18K GOLD BRACELET

gross weight approximately: 74 grams; length: 7 7/8in.

\$2,000 - 3,000

To be sold without reserve

165

A LAPIS LAZULI AND GOLD NECKLACE, CIRCA 1970

length: 41 1/2in.

\$2,000 - 3,000

To be sold without reserve

166

AN 18K TRI-COLOR GOLD THISTLE CLIP AND 18K GOLD EAR CLIP SET, MARIO BUCCELLATI

signed M. Buccellati; weighing approximately: 44 grams; clip dimensions: 4 x 2in., ear clip dimensions: 1 1/8 x 7/8in.

\$3,000 - 5,000

167

AN EMERALD, DIAMOND AND BI-COLOR GOLD RING, BUCCELLATI, ITALIAN

oval cabochon emerald approximately: 14.94 x 10.57 x 7.12mm; signed Buccellati; size: 8 1/2

\$5,000 - 8,000

168

AN 18K BI-COLOR GOLD BRACELET

weighing approximately: 74 grams; length: 7 3/4in., width: 1 1/8in.

\$2,000 - 3,000

169

A PAIR OF CULTURED PEARL, EMERALD, DIAMOND AND BI-COLOR EAR CLIPS

pearls approximately: 7.7 to 7.9mm; estimated total diamond weight: 1.75cts; dimensions: 1 1/4 x 1 1/8in.

\$2,000 - 3,000



170

**170
A PAIR OF EMERALD, DIAMOND AND
GOLD EARCLIPS**

two square modified brilliant-cut emeralds approximately: 7.66 x 7.23 x 4.40mm and 7.67 x 7.26 x 5.00mm; *estimated total diamond weight: 3.15cts; dimensions: 1 1/8 x 1in.*

\$5,000 - 7,000

Accompanied by AGL report #1096961 dated November 26, 2018, stating the emeralds as: Natural, Colombian origin, minor clarity enhancement.

172

**172
A DIAMOND AND 18K BI-COLOR GOLD
RING**

estimated total diamond weight: 3.05cts; size: 5

\$1,500 - 2,000
To be sold without reserve

173

**173
A RUBY, DIAMOND AND 18K GOLD
RING, FRENCH**

oval brilliant-cut ruby approximately: 11.07 x 8.23 x 3.94mm; *with French assay and maker's marks; size: 6 3/4*

\$3,000 - 5,000

**171
A RUBY, DIAMOND AND 18K GOLD
BRACELET**

estimated total diamond weight: 1.90cts; gross weight approximately: 44 grams; length; 7 1/4in.

\$2,000 - 3,000

**171A
A GILT STEEL CONCEALED DIAL
'MEDOR' STRAP WRISTWATCH,
HERMES**

quartz movement; *case, dial and movement signed; case no. 693833; case width: 24mm.*

\$1,800 - 2,500

171A

171



174



176



177



175



178

174
**A PINK SAPPHIRE, BLACK ONYX,
DIAMOND AND 18K GOLD RING**

oval cabochon pink sapphire approximately:
15.02 x 12.10 x 6.93mm; size: 9

\$2,000 - 3,000

175
**A LADY'S EMERALD, DIAMOND AND
18K GOLD DATEJUST BRACELET
WRISTWATCH, ROLEX**

automatic movement with box, papers and
tags; case, dial, and movement signed; ref.
69178, case no. S237308; gross weight
approximately: 73 grams; case width: 27mm;
length: 6in.

\$5,000 - 8,000

176
**AN EMERALD, DIAMOND AND GOLD
PENDANT ON CHAIN**

pear modified brilliant-cut emerald
approximately: 16.00 x 12.44 x 7.22mm;
estimated total diamond weight: 2.10cts;
length: 17 2/3in.

\$4,500 - 5,500

Accompanied by AGL report #1096960
dated November 26, 2018, stating the
emerald as: Natural, Colombian origin, minor
clarity enhancement.

177
A RUBY, DIAMOND AND 18K GOLD RING
estimated total diamond weight: 2.00cts;
size: 6 3/4

\$2,000 - 3,000

178
**A COLORED DIAMOND, DIAMOND,
ENAMEL, GEM-SET PLATINUM AND 18K
GOLD HINGED BANGLE**

estimated total diamond weight: 16.00cts;
gross weight approximately: 116 grams;
diameter: 2 3/8in. (yellow diamonds untested
for origin of color)

\$8,000 - 12,000



179



180



181

**ALL PROCEEDS OF THE SALE
TO BENEFIT THE CHARITY
TOTALCOURAGE**

**179
A CULTURED PEARL, DIAMOND AND BI-
COLOR GOLD COLLAR**

pearls approximately: 6.9 to 7.7mm;
estimated total diamond weight: 3.60cts;
length: 15 1/2in.

\$4,000 - 6,000

TotalCourage, founded by Colonel Darryl W. Daugherty, Jr., is a public charity that provides character coaching to high school and college student-athletes across the US and Canada.

PROPERTY FROM VARIOUS OWNERS

**180
A DIAMOND AND BI-COLOR GOLD RING**
estimated total diamond weight: 1.45cts;
size: 6

\$1,500 - 2,000
To be sold without reserve

**181
A PAIR OF CARNELIAN, COLORED
CULTURED PEARL, TURQUOISE,
COLORED DIAMOND, DIAMOND AND
18K GOLD EAR PENDANTS**

length: 3 5/8in. (colored pearls and colored diamonds untested for origin of color)

\$1,000 - 1,500



182



184



183

182
**A TURQUOISE, DIAMOND, SAPPHIRE
AND GOLD RING**

modified rectangular cabochon turquoise
approximately: 26.10 x 19.95 x 10.56mm;
estimated total diamond weight: 1.30cts;
size: 6 3/4

\$2,000 - 3,000

183
**A COLLECTION OF ENAMEL AND GEM-
SET GOLD CUFFLINKS AND DRESS SET**

one pair signed *Tony Duquette*; one
pair signed *Tiffany & Co.*; gross weight
approximately: 71 grams; lengths: 1 1/8in., 1
1/4in., 3/4in.

\$3,000 - 5,000

184
**A LADY'S DIAMOND AND 18K GOLD
'PREMIÈRE CHAIN' INTEGRAL
BRACELET WRISTWATCH, CHANEL**

quartz movement, with pouch and booklet
with original receipt; case, dial and
movement signed; case no. FR56179;
estimated total diamond weight: 3.50cts;
gross weight approximately: 59 grams; case
width: 20mm; length: 6in.

\$18,000 - 25,000

188



185



187



186



189



190

185
**A TANZANITE, YELLOW SAPPHIRE,
 COLORED DIAMOND AND 18K GOLD
 RING**

oval cabochon tanzanite approximately:
 20.64 x 15.78 x 9.89mm; size: 7 (brown
 diamonds untested for origin of color)

\$1,800 - 2,500

186
**A PAIR OF DIAMOND AND 18K GOLD
 BANGLES, KIESELSTEIN CORD, 1982**
*signed Kieselstein Cord, with maker's marks;
 gross weight approximately: 108 grams;
 length: 17in.*

\$3,000 - 5,000

187^Y
**A PAIR OF CORAL, LAPIS LAZULI AND
 14K GOLD NECKLACES**

coral beads approximately: 9.4 to 11.5mm;
 lapis lazuli beads approximately: 10.6 to
 17.6mm; length: 25in. and 26in.

\$2,500 - 3,500

188^Y
**A PAIR OF TURBO SHELL, CORAL
 AND 14K GOLD EAR CLIPS, PATRICIA
 SCHEPPS VAILL OF SEAMAN SCHEPPS,
 CIRCA 1970**

*signed P.S.V of Seaman Schepps;
 dimensions: 1 1/4 x 1in.*

\$3,000 - 5,000

189
**A PAIR OF CARNELIAN, DIAMOND AND
 GOLD EAR CLIPS**

dimensions: 1 1/2 x 1 1/2in.

\$1,200 - 1,500

190
**A CARNELIAN AND 18K GOLD INTAGLIO
 RING WITH THREE GOLD BANDS**

*intaglio ring signed Kieselstein Cord; gross
 weight approximately: 79 grams; sizes: 6 1/2
 and 7 1/2*

\$1,800 - 2,500



191

192

193



191

A 14K GOLD NECKLACE AND BRACELET SET, ITALIAN

with Italian assay marks; gross weight approximately: 88 grams; necklace length: 16 1/2in; bracelet length: 7in.

\$2,000 - 3,000

192

AN AMETHYST, DIAMOND AND 18K GOLD RING

rectangular cabochon amethyst approximately: 16.26 x 13.22 x 8.54mm; size: 7

\$2,000 - 3,000

193

A KUNZITE, DIAMOND, PLATINUM AND 18K GOLD RING

oval mixed-cut kunzite approximately: 21.93 x 13.36 x 11.30mm; size: 7 1/2

\$2,000 - 3,000



195



197



194



196

194
A DIAMOND AND 18K BI-COLOR GOLD RING

*estimated total diamond weight: 1.05cts;
size: 7 1/4*

\$1,500 - 2,000

195
A PAIR OF TURQUOISE AND GEM-SET 18K GOLD EAR CLIPS

diameter: 7/8in.

\$1,000 - 1,500

196
A DIAMOND AND 18K BI-COLOR GOLD BANGLE

*estimated total diamond weight: 3.75cts;
gross weight approximately: 69 grams;
diameter: 2 3/8in.*

\$4,000 - 6,000

197
AN AMETHYST, EMERALD, DIAMOND AND 18K GOLD RING

*cut-cornered rectangular step-cut amethyst
approximately: 10.28 x 12.50 x 7.00mm;
estimated total diamond weight: 2.10cts;
size: 6 1/4*

\$1,500 - 2,000



198

198
A PAIR OF DIAMOND AND 18K WHITE GOLD EAR PENDANTS

estimated total diamond weight: 25.45cts; length: 2 3/4in.

\$25,000 - 35,000

199
A DIAMOND AND 18K WHITE GOLD RIVIERE NECKLACE

center round brilliant-cut diamond approximately: 1.55cts; *estimated total remaining diamond weight: 16.30cts; length: 17in.*

\$10,000 - 15,000



199

200

201

200
A SOLITAIRE DIAMOND AND 18K WHITE GOLD RING

old European-cut diamond weighing: 1.89cts; *size: 6 1/2*

\$2,000 - 4,000

Accompanied by GIA report #6197763680 dated October 22, 2018, stating the diamond as: M color, VS2 clarity.

201
A DIAMOND AND PLATINUM BAND

estimated total diamond weight: 3.00cts; size: 5 3/4

\$1,500 - 2,500





202



203



204

202

A PAIR OF TURQUOISE, DIAMOND AND RHODIUM PLATED 18K WHITE GOLD EAR CLIPS

estimated total diamond weight: 1.75cts; dimensions: 7/8 x 5/8in.

\$1,800 - 2,500

203

A PAIR OF CULTURED PEARL, DIAMOND AND RHODIUM PLATED 18K WHITE GOLD DAY/NIGHT EAR PENDANTS

pearls approximately: 14.3 to 14.5mm; estimated total diamond weight: 1.35cts; length: 1 1/4in.

\$2,500 - 3,500

204

A DIAMOND AND 18K WHITE GOLD BRACELET

estimated total diamond weight: 6.25cts; length: 7 1/4

\$2,000 - 3,000

205

A PAIR OF TURQUOISE, DIAMOND AND 18K WHITE GOLD EAR PENDANTS

length: 3 1/4in.

\$1,200 - 1,500

206

A DIAMOND AND PLATINUM WEDDING SET, TIFFANY & CO.

round brilliant-cut diamond weighing: 1.72cts; signed Tiffany & Co., with papers and two signed boxes; size: 5

\$13,000 - 18,000

Accompanied by Tiffany & Co. certificate #1170058, stating the diamond as: G color, VVS2 clarity.

207

A CULTURED PEARL, COLORED CULTURED PEARL AND 14K WHITE GOLD NECKLACE

pearls approximately: 8.9 to 13.8mm; length: 35in. (pearls untested for origin of color)

\$7,000 - 10,000

208

A TURQUOISE, DIAMOND AND RHODIUM PLATED 18K WHITE GOLD CUFF

diameter: 2 3/8in.

\$1,800 - 2,500

209

A TURQUOISE, DIAMOND AND RHODIUM PLATED 18K WHITE GOLD RING

round cabochon turquoise approximately: 19.27 x 19.48 x 8.60mm; estimated total diamond weight: 1.20cts; size: 7

\$1,500 - 2,000

205



206



207



209



208



**210
A KUNZITE, COLORED DIAMOND AND
18K WHITE GOLD RING**

cushion mixed-cut kunzite approximately:
19.99 x 19.91 x 14.34mm; *estimated total
diamond weight: 3.25cts; size: 6 3/4 (brown
diamond untested for origin of color)*

\$5,000 - 7,000

**211
A COLORED DIAMOND, DIAMOND AND
18K WHITE GOLD NECKLACE**

*total diamond weight: 6.40cts; gross weight
approximately: 38 grams; length: 16in.
(brown diamonds untested for origin of color)*

\$3,500 - 4,500

**212
A PAIR OF KUNZITE, COLORED
DIAMOND AND 18K WHITE GOLD EAR
CLIPS**

*estimated total diamond weight: 5.25cts;
dimensions: 1 x 1in. (brown diamonds
untested for origin of color)*

\$6,500 - 7,500

**213
A DIAMOND AND PLATINUM RING WITH
A PAIR OF DIAMOND AND 18K WHITE
GOLD BANDS**

*center trilliant-cut diamond weighing:
2.06cts; estimated total remaining diamond
weight: 2.70cts; sizes: 5 3/4 and 6*

\$5,000 - 7,000



214



215



216



217



218

**214
A PAIR OF CULTURED PEARL, DIAMOND
AND 18K ROSE GOLD DAY/NIGHT EAR
PENDANTS**

pearls approximately: 15.0 to 15.3mm;
estimated total diamond weight: 2.20cts;
length: 1 1/2in.

\$3,500 - 5,500

**215
A CULTURED PEARL, DIAMOND AND
RHODIUM PLATED 18K WHITE GOLD
PENDANT ON 14K WHITE GOLD CHAIN**

cultured pearl approximately: 15.7mm; chain
length: 16in.

\$1,200 - 1,800
To be sold without reserve

**216
A CULTURED PEARL, COLORED
CULTURED PEARL AND 18K WHITE
GOLD NECKLACE**

pearls approximately: 9.0 to 12.3mm; length:
17in. (pearls untested for origin of color)

\$2,500 - 3,500

**217
AN AMETHYST, CHALCEDONY,
DIAMOND AND RHODIUM PLATED 18K
WHITE GOLD RING**

rectangular cabochon amethyst
approximately: 13.94 x 10.99 x 6.04mm;
size: 7

\$2,000 - 4,000

**218
A CULTURED PEARL, DIAMOND AND
18K ROSE GOLD CUFF**

pearl approximately: 12.9mm; estimated total
diamond weight: 2.60cts; diameter: 2 3/8in.

\$3,500 - 5,500



221



220



219



222



223



224

219
**A PERIDOT, DIAMOND AND RHODIUM
 PLATED 18K WHITE GOLD BUCKLE
 BRACELET**

*estimated total diamond weight: 2.30cts;
 length: 7 1/2in.*

\$3,000 - 5,000

220
**A PINK SAPPHIRE, DIAMOND AND
 RHODIUM PLATED 14K WHITE GOLD
 TORSADE**

*ten strands of faceted pink sapphire beads;
 length: 17 3/8in.*

\$2,000 - 3,000
To be sold without reserve

221
**TWO CULTURED PEARL, DIAMOND AND
 WHITE GOLD NECKLACES**

*pearls approximately: 4.5 to 9.1mm; lengths:
 16in. and 17in.*

\$900 - 1,200

**PROPERTY FROM THE ESTATE OF A
 COLORADO ARTIST**

222
**A CULTURED PEARL, DIAMOND, WHITE
 METAL AND WHITE GOLD BRACELET**

*pearls approximately: 4.5 to 4.9mm;
 estimated total diamond weight: 3.50cts;
 length: 7 5/8in.*

\$1,500 - 2,000
To be sold without reserve

223
**AN AMETHYST, DIAMOND AND BI-
 COLOR GOLD RING**

*oval brilliant-cut amethyst approximately:
 23.00 x 16.47 x 12.02mm; estimated total
 diamond weight: 3.00cts; size: 5*

\$1,500 - 2,000
To be sold without reserve

224
**A PAIR OF DIAMOND AND PLATINUM
 ETERNITY BANDS, TOGETHER WITH
 A PAIR OF SAPPHIRE AND 18K WHITE
 GOLD ETERNITY BANDS**

*estimated total diamond weight: 3.00cts;
 sizes: 4 3/4 and 6*

\$1,500 - 2,000
To be sold without reserve



225



226

PROPERTY FROM VARIOUS OWNERS

225

A PAIR OF PINK TOURMALINE, BLUE TOPAZ AND 18K WHITE GOLD EAR PENDANTS, ATTRIBUTED TO LAURA MUNDER

*gross weight approximately: 29 grams;
dimensions: 2 1/4 x 1 1/4in.*

\$2,000 - 3,000

226

A PINK SAPPHIRE, DIAMOND AND 14K WHITE GOLD TORSADE AND BRACELET SET

necklace comprised of ten strands of faceted pink sapphire beads; bracelet with six rows of faceted pink sapphire beads; torsade length: 23 3/8in., bracelet length: 6 1/2in.

\$1,800 - 2,500

To be sold without reserve



227

227

**A SUITE OF 14K GOLD, 18K GOLD AND
STERLING SILVER JEWELRY, DAVID
YURMAN**

*signed D.Y. and D. Yurman; gross weight
approximately: 192 grams; necklace
length: 16in., cuff diameter: 2 1/2in., watch
diameter: 2 1/8in., earring length: 1in., ring
size: 6*

\$1,500 - 2,000



231

232

230

228

229

228

A DIAMOND AND PLATINUM RING

round brilliant-cut diamond approximately: 1.10cts; size: 7 3/4

\$3,000 - 5,000

229

AN EMERALD, DIAMOND AND WHITE GOLD RING

marquise mixed-cut emerald approximately: 17.81 x 8.22 x 6.46mm; estimated total diamond weight: 1.95cts; size: 6 1/2

\$2,500 - 3,500

Accompanied by AGL report #1096959 dated November 26, 2018, stating the emerald as: Natural, Colombian origin, minor clarity enhancements.

230

A CULTURED PEARL NECKLACE

pearls approximately: 8.9 to 9.3mm; length: 32in.

\$1,500 - 2,000

To be sold without reserve

231

A PAIR OF EMERALD, DIAMOND AND 18K WHITE GOLD EAR PENDANTS

estimated total diamond weight: 2.70cts; length: 1 3/4in.

\$4,000 - 6,000

Accompanied by GIA report #5191486413 dated July 16, 2018, stating the emeralds as: Natural, Zambian origin, minor clarity enhancement (F2).

232

A DIAMOND, CULTURED PEARL AND PLATINUM RING

pearl approximately: 8.9mm; estimated total diamond weight: 2.60cts; size: 5

\$1,200 - 1,800

To be sold without reserve



233

237

238

234

236

235

233

A PAIR OF DIAMOND, CULTURED PEARL AND 14K WHITE GOLD EARRINGS

pearls approximately: 9.4mm; *estimated total diamond weight: 2.40cts; length: 7/8in.*

\$2,800 - 3,500

234

AN EMERALD, DIAMOND AND 18K WHITE GOLD RING

cut-cornered rectangular step-cut emerald approximately: 8.04 x 6.44 x 4.10mm; *estimated total diamond weight: 1.40cts; size: 5 3/4*

\$1,000 - 1,500

To be sold without reserve

235

A DIAMOND AND RHODIUM PLATED 18K GOLD BRACELET

estimated total diamond weight: 7.75cts; length: 7 1/2in.

\$4,000 - 6,000

236

A DIAMOND AND PLATINUM RING

center round brilliant-cut diamond weighing: 1.35cts; *size: 6*

\$4,000 - 6,000

Accompanied by GIA report #2205011723 dated January 25, 1019, stating the diamond as: G color, VS1 clarity.

237

AN EMERALD, DIAMOND AND 18K WHITE GOLD NECKLACE

estimated total diamond weight: 3.45cts; length: 17 1/2in.

\$3,500 - 4,500

238

A PAIR OF EMERALD, DIAMOND AND PLATINUM EAR PENDANTS

total diamond weight: 1.02cts; length: 1 3/4in.

\$1,800 - 2,500



239



240



241



242



243



244



239
A PAIR OF SAPPHIRE, DIAMOND AND 18K WHITE GOLD STUD EARRINGS
diameter: 1/4in.

\$2,000 - 3,000

240
A PINK SAPPHIRE, SAPPHIRE, DIAMOND AND 18K WHITE GOLD RING
size: 7 1/4

\$1,800 - 2,500

241
A PAIR OF SAPPHIRE, DIAMOND AND 18K WHITE GOLD EAR PENDANTS
estimated total diamond weight: 2.15cts; length: 2in.

\$1,500 - 2,500

242
A PAIR OF DIAMOND, EMERALD AND RHODIUM PLATED 18K WHITE GOLD HOOP EARRINGS
estimated total diamond weight: 4.90cts; diameter: 1 7/8in.

\$3,500 - 4,500

243
A RUBELLITE TOURMALINE, DIAMOND, 18K GOLD AND PLATINUM RING
oval mixed-cut rubellite tourmaline approximately: 12.59 x 8.94 x 6.57mm; size: 7 1/4

\$1,800 - 2,500

244
A SAPPHIRE AND 18K WHITE GOLD CUFFLINK AND STUD SET
gross weight approximately: 44 grams; cuff link dimensions: 5/8in., stud dimensions: 7/16in.

\$1,500 - 2,000
To be sold without reserve



245



246



247

245
A PAIR OF DIAMOND AND 18K WHITE GOLD EARRINGS

estimated total diamond weight: 4.60cts; length: 1 1/8in.

\$2,500 - 3,500

246
A DIAMOND, 18K WHITE GOLD AND PLATINUM PENDANT

heart brilliant-cut diamond approximately: 2.50cts; dimensions: 1/2 x 1/2in.

\$4,000 - 6,000

247
A RUBY, DIAMOND AND PLATINUM BRACELET AND EAR PENDANT SET

estimated total diamond weight: 12.00cts; bracelet length: 6 1/2in; earring length: 1in.

\$4,000 - 6,000



248

249



248
**A MULTI-COLOR SAPPHIRE, TSAVORITE
GARNET, DIAMOND AND 14K GOLD
NECKLACE AND EAR CLIP SET, BEN
KHO**

*signed Ben Kho; estimated total diamond
weight: 2.20cts; gross weight approximately:
91 grams; length: 17in; ear clip: 5/8 x 1/2in.*

\$3,000 - 5,000
To be sold without reserve

249
**A MULTI-COLOR SAPPHIRE, DIAMOND
AND 14K GOLD BRACELET, BEN KHO**
signed B-Kho; length: 7 1/8in.

\$2,500 - 3,500
To be sold without reserve



250



251



250

AN ORANGE SAPPHIRE NECKLACE

seven strands of faceted orange sapphire beads; length: 14in. to 17in. (on adjustable cord)

\$1,500 - 2,500

To be sold without reserve

251

TWO COLORED SAPPHIRE NECKLACES

one necklace comprised of six strands of faceted blue sapphire beads, the other of three strands of faceted pink sapphire beads; blue sapphire bead length: 20 1/2in. to 23in; pink sapphire bead length: 15in. to 16in; (both on adjustable cord)

\$1,500 - 2,500

To be sold without reserve



255



254



252



253



252
AN EMERALD, DIAMOND AND BI-COLOR GOLD CLIP
 oval cabochon emerald approximately: 25.28 x 19.71mm; dimensions: 4 x 1 3/4in.

\$1,200 - 1,800

253
A DIAMOND, JADEITE AND 18K GOLD BUTTERFLY RING
 estimated total diamond weight: 3.30cts; size: 6 1/2

\$2,500 - 3,500

254
A JADEITE BEAD AND METAL NECKLACE
 jadeite beads approximately: 7.3 to 9.4mm; length: 40in.

\$1,500 - 2,000
 To be sold without reserve

Accompanied by Mason Kay report #190122-9995 dated January 22, 2019, stating: Natural Jadeite Jade-No Dye or polymer detected-'A'Jade.

255^Y
A CORAL, DIAMOND AND 18K GOLD CLIP, EAR CLIPS AND RING
 brooch and ear clips signed Industria Argentina, no. 151986 and 151987; estimated total diamond weight: 3.05cts; brooch dimensions: 2 x 1 3/4in; ear clip diameter: 1in; ring size: 5 1/4

\$2,000 - 3,000

256
A DIAMOND AND 18K GOLD NECKLACE
 estimated total diamond weight: 7.30cts; gross weight approximately: 36 grams; length: 16 1/2in.

\$5,000 - 7,000

257
A PAIR OF DIAMOND AND 18K GOLD EAR PENDANTS
 estimated total diamond weight: 1.60cts; length: 1 1/2in.

\$1,500 - 2,500

258
A DIAMOND AND 18K YELLOW GOLD DOME RING
 with maker's mark; estimated total diamond weight: 4.30cts; gross weight approximately: 25 grams; size: 7

\$3,000 - 5,000

259
A DIAMOND AND 18K GOLD BRACELET
 estimated total diamond weight: 3.00cts; length: 7in.

\$2,000 - 3,000



260

**260
A DIAMOND, 18K GOLD AND PLATINUM
BROOCH**

removable frame; estimated total diamond weight: 4.00cts; gross weight approximately: 38 grams; dimensions: 2 1/2 x 2 1/4in.

\$4,000 - 6,000

**261
A PAIR OF CITRINE, QUARTZ AND 14K
GOLD TORSADE NECKLACES**

one necklace comprised of ten strands of faceted citrine beads, the other of six strands of faceted quartz and citrine beads; length: 17in.

\$1,200 - 1,800
To be sold without reserve

262

**262
A PAIR OF CITRINE, DIAMOND AND 18K
GOLD EAR CLIPS, FOCHTMANN**

with maker's mark; diameter: 3/4in.

\$1,000 - 1,500
To be sold without reserve



263



265



264



266

263
A DIAMOND AND 18K BI-COLOR GOLD CLIP/PENDANT

estimated total diamond weight: 3.00cts; gross weight approximately: 77 grams; dimensions: 3 1/8 x 3 1/8in.

\$3,500 - 4,500

264
AN EMERALD, DIAMOND, ENAMEL, SILVER AND GOLD RING

oval brilliant-cut emerald approximately: 6.17 x 4.50mm; size: 8

\$1,500 - 2,500
To be sold without reserve

265
AN OPAL, DIAMOND AND 18K GOLD RING, TREMONTI, AUSTRALIAN

center oval cabochon opal weighing: 3.68cts; opal reversible, on swivel; signed Tremonti; total diamond weight: 1.26cts; size: 5 1/4

\$2,500 - 3,500
To be sold without reserve

266
A 22K GOLD HINGED BANGLE
weight approximately: 46 grams; diameter: 2 3/8in; width: 1 1/8in.

\$1,800 - 2,500
To be sold without reserve



267

269

268

PROPERTY FROM THE ESTATE OF A LOS ANGELES LADY

267
A PLIQUE-À-JOUR ENAMEL, OPAL AND GOLD PEACOCK PENDANT, TOGETHER WITH A FRENCH ART NOUVEAU GOLD BROOCH

brooch with French assay and maker's marks; dimensions: 2 1/2 x 2 5/8in. and 1 5/16 x 1 7/8in.

\$1,500 - 2,000
To be sold without reserve

268
A 19TH CENTURY SEED PEARL AND BI-COLOR GOLD LOCKET NECKLACE, CIRCA 1880

gross weight approximately: 37 grams; length: 21 1/2in.

\$1,500 - 2,000
To be sold without reserve

269
A DIAMOND, ENAMEL AND 18K GOLD BRACELET WITH A PAIR OF ENAMEL, YELLOW SAPPHIRE, DIAMOND AND GOLD EAR PENDANTS

gross weight approximately: 35 grams; bracelet length: 7 1/2in; earring length: 1 7/8in.

\$1,500 - 2,000
To be sold without reserve



270



271



272

270

A 19TH CENTURY PAINTED PORCELAIN, DIAMOND, PEARL AND GOLD PENDANT/BROOCH, CIRCA 1850

with glazed compartment; *gross weight approximately: 62 grams; dimensions: 3 1/2 x 2in.*

\$2,000 - 3,000

271

A 19TH CENTURY ENAMEL, DIAMOND AND GOLD LOCKET ON CHAIN, CIRCA 1880

with glazed compartment; *gross weight approximately: 34 grams; length: 34in.*

\$1,500 - 2,000
To be sold without reserve

272

A MID 19TH CENTURY ENAMEL AND GOLD HINGED CUFF WITH LOCKET, CIRCA 1880

gross weight approximately: 59 grams; diameter: 2 1/2in; width: 1 to 1 3/4in.

\$1,500 - 2,000
To be sold without reserve



273

273
A LATE 19TH CENTURY ENAMEL AND GOLD LOCKET, CIRCA 1885

dimensions: 3 3/4 x 1 1/2in.

\$1,500 - 2,000
To be sold without reserve



274

274
A RUBY, ENAMEL, DIAMOND AND GOLD BROOCH

*estimated total diamond weight: 1.60cts;
diameter: 1 9/16in.*

\$1,800 - 2,500



275

275
A LATE 19TH CENTURY LACQUER AND GOLD COIN PURSE, CIRCA 1880

*weighing approximately: 41 grams;
dimensions: 2 1/4 x 2in.*

\$1,500 - 2,000
To be sold without reserve





276

**276
AN ART DECO DIAMOND AND
PLATINUM PENDANT/BROOCH, CIRCA
1920**

*estimated total diamond weight: 3.40cts;
length: 2 3/8in.*

\$1,500 - 2,000
To be sold without reserve

277

**277
AN ART DECO DIAMOND, EMERALD
AND PLATINUM PENDANT-WATCH AND
CHAIN, CIRCA 1930**

*estimated total diamond weight: 1.35cts;
length: 14 1/4in.*

\$1,500 - 2,500
To be sold without reserve

278

**278
A DIAMOND AND WHITE GOLD
NECKLACE**

*estimated total diamond weight: 3.60cts;
gross weight approximately: 27 grams;
length: 16in.*

\$1,500 - 2,000
To be sold without reserve

279

**279
AN ART DECO DIAMOND, STONE AND
PLATINUM BRACELET, CIRCA 1930**

*estimated total diamond weight: 3.65cts;
length: 7 1/2in.*

\$1,500 - 2,000
To be sold without reserve

280



**280
A DIAMOND AND GEM-SET WHITE
GOLD BROOCH**

*estimated total diamond weight: 7.50cts;
dimensions: 2 1/4 x 1 3/4in.*

\$3,000 - 5,000



281

**281
A DIAMOND, PLATINUM, CORD AND METAL WRISTWATCH**

dial signed Marvin; estimated total diamond weight: 2.40cts; length: 6 1/2in.

\$1,500 - 2,000
To be sold without reserve



282

**282
AN ART DECO DIAMOND, STONE AND PLATINUM BROOCH/PENDANT, CIRCA 1925**

on 18k white gold chain; estimated total diamond weight: 2.20cts; length: 18 1/2in.

\$1,500 - 2,000
To be sold without reserve



283

estimated total diamond weight: 2.40cts; length: 18in.

\$2,500 - 3,500



284

**283
AN EMERALD, DIAMOND, PLATINUM AND GOLD NECKLACE**

dimensions: 3 x 1 7/8in.

\$1,500 - 2,000
To be sold without reserve

**284
AN ART DECO ENAMEL, JADEITE, DIAMOND AND 14K GOLD COMPACT PENDANT, CIRCA 1925**



285



286



287



288

285

A DIAMOND AND PLATINUM CLIP

*estimated total diamond weight: 3.90cts;
dimensions: 2 x 1 3/4in.*

\$3,000 - 5,000

286

A DIAMOND AND WHITE GOLD CHAIN

length: 54in.

\$1,500 - 2,000

To be sold without reserve

287

**A CULTURED PEARL, DIAMOND AND
18K WHITE GOLD NECKLACE**

*pearls approximately: 13.6 to 15.4mm;
estimated total diamond weight: 6.00cts;
length of necklace: 15 1/2in.*

\$1,800 - 2,500

To be sold without reserve

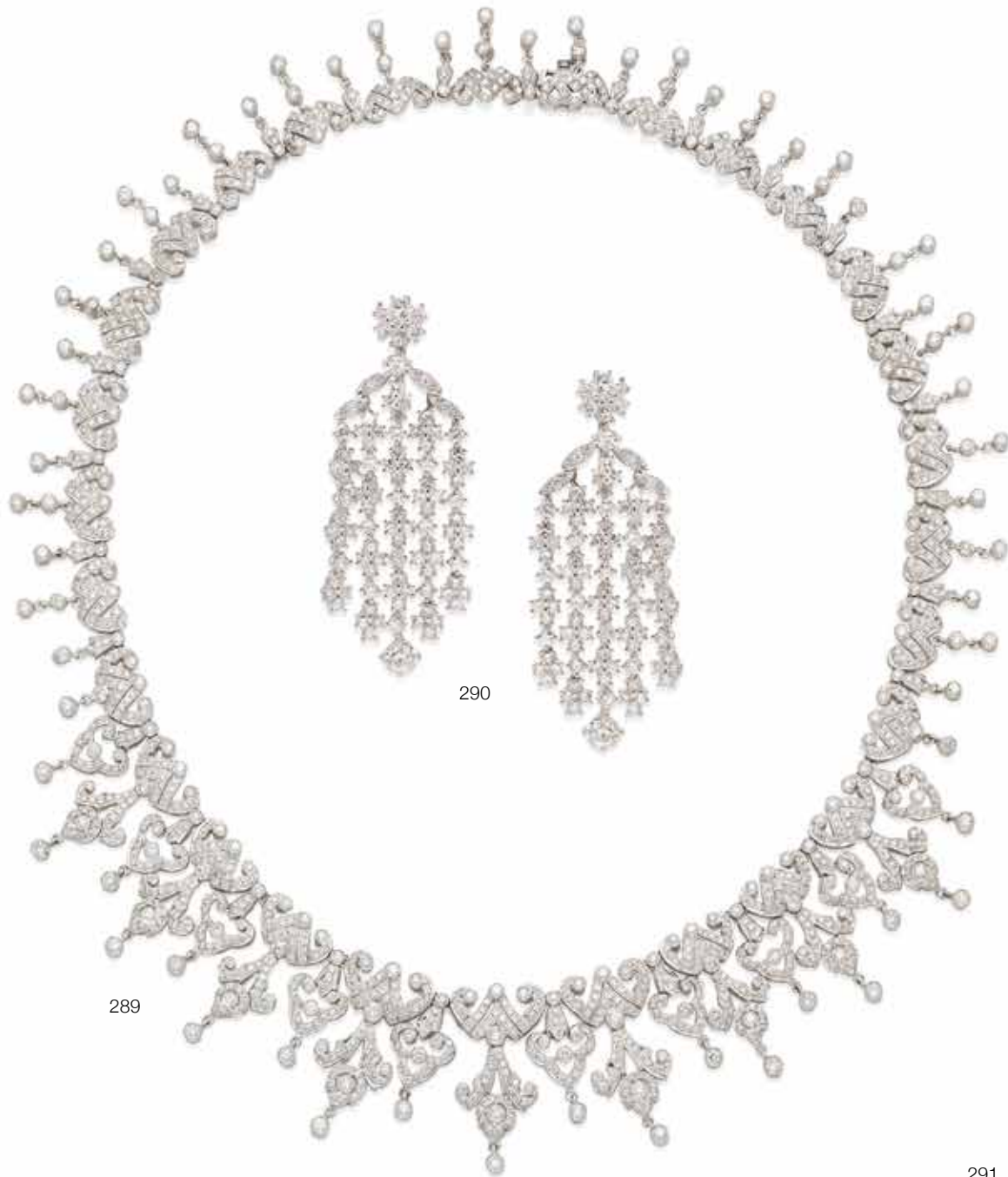
288

**A PAIR OF CULTURED PEARL, DIAMOND
AND WHITE GOLD DAY/NIGHT EAR
CLIPS**

*pearls approximately: 12.2 to 12.4mm;
estimated total diamond weight: 4.30cts;
length: 2 3/8in.*

\$1,800 - 2,500

To be sold without reserve



289

290

291



**289
A DIAMOND AND 18K WHITE GOLD
NECKLACE**

*estimated total diamond weight: 10.00cts;
gross weight approximately: 59 grams;
length: 15 3/4in.*

\$3,000 - 5,000

**290
A PAIR OF DIAMOND AND WHITE GOLD
EAR PENDANTS**

*no. 5784; estimated total diamond weight:
9.30cts; length: 2 1/8in.*

\$2,000 - 3,000

**291
A DIAMOND AND PLATINUM BRACELET**

*estimated total diamond weight: 2.05cts;
gross weight approximately: 29 grams;
length: 7 1/2in.*

**\$1,500 - 2,000
To be sold without reserve**



292



293



294



295



292

A DIAMOND AND 18K WHITE GOLD BUCKLE RING

estimated total diamond weight: 1.95cts; size: 7

\$1,500 - 2,000
To be sold without reserve

293

A PAIR OF AQUAMARINE, DIAMOND AND RHODIUM PLATED 18K WHITE GOLD EAR CLIPS AND RING SET, ITALIAN

signed Italy; estimated total diamond weight: 2.00cts; ear clip dimensions: 3/4 x 15/16in; ring size: 7 1/4

\$1,500 - 2,000
To be sold without reserve

294

A DIAMOND AND 18K WHITE GOLD PENDANT NECKLACE

no. 141; estimated total diamond weight: 2.20cts; length: 18 1/2in.

\$1,500 - 2,000
To be sold without reserve

295

A PAIR OF DIAMOND AND 18K WHITE GOLD EAR CLIPS

estimated total diamond weight: 3.50cts; length: 1 3/4in.

\$1,500 - 2,000
To be sold without reserve



296

**296
A SAPPHIRE, DIAMOND AND 18K WHITE
GOLD SUITE**

*pendant length: 1 7/8in; ear clip length:
3/4in; ring size: 6 3/4*

\$1,500 - 2,500
To be sold without reserve



**297
A DIAMOND, SAPPHIRE AND PLATINUM
'LEGACY' NECKLACE, TIFFANY & CO.**

*signed Tiffany & Co.; estimated total
diamond weight: 1.60cts; length: 19 3/4in.*

\$2,000 - 3,000



297



298

**298
A CULTURED PEARL, SAPPHIRE,
DIAMOND AND RHODIUM PLATED
18K WHITE GOLD 'OCEAN RIPPLE'
PENDANT WITH CHAIN, MIKIMOTO**

*pearl approximately: 12.9mm; with maker's
mark; chain length: 18in.; pendant diameter:
1 5/8in.*

\$3,000 - 5,000



299



301



300



302

**299
A PAIR OF DIAMOND AND 18K WHITE
GOLD EAR PENDANTS**

*estimated total diamond weight: 4.20cts;
length: 1 11/16in.*

**\$1,500 - 2,000
To be sold without reserve**

**300
A DIAMOND AND RHODIUM PLATED
GOLD HINGED BANGLE**

*estimated total diamond weight: 1.00ct;
gross weight approximately: 44 grams;
diameter: 2 3/8in.*

**\$1,500 - 2,000
To be sold without reserve**

**301
A PAIR OF COLORED DIAMOND,
DIAMOND AND 18K BI-COLOR GOLD
EAR CLIPS**

*attributed to Sabbadini; estimated total
diamond weight: 3.60cts; length: 1in. (yellow
diamonds untested for origin of color)*

\$2,500 - 3,500

**302
A DIAMOND, COLORED DIAMOND
AND BI-COLOR GOLD PENDANT ON
COLORED DIAMOND AND 18K WHITE
GOLD CHAIN**

*estimated total diamond weight: 7.10cts;
chain length: 15in; pendant/brooch
dimensions: 1 1/2 X 1 1/2in. (colored
diamonds untested for origin of color)*

\$4,000 - 6,000



303

303
**A PEARL, COLORED CULTURED PEARL,
DIAMOND AND RHODIUM PLATED 18K
WHITE GOLD NECKLACE**

pearls approximately: 12.5 to 12.7mm;
length: 16 3/4in. (pearl untested for origin of
color)

\$1,500 - 2,000
To be sold without reserve



304

304
**A DIAMOND AND 18K WHITE GOLD
NECKLACE**

estimated total diamond weight: 8.80cts;
length: 16 1/2in.

\$3,000 - 5,000

305
**AN AMETHYST, DIAMOND AND GEM-
SET 18K WHITE GOLD RING**

estimated total diamond weight: 1.20cts;
size: 7

\$1,500 - 2,000
To be sold without reserve



306

306
**A DIAMOND AND 18K WHITE GOLD
RING/PENDANT**

estimated total diamond weight: 2.35cts;
size: 6 1/2

\$1,500 - 2,000
To be sold without reserve



307

308



309



310

307
A DIAMOND AND 14K GOLD NECKLACE
*estimated total diamond weight: 3.60cts;
length: 16 1/2in.*

\$1,500 - 2,000
To be sold without reserve

308
A DIAMOND AND 18K GOLD BROOCH
*estimated total diamond weight: 2.85cts;
dimensions: 2 x 1 1/2in.*

\$1,800 - 2,500
To be sold without reserve

309
**A PAIR OF DIAMOND AND 18K GOLD
EAR CLIPS, VAN CLEEF & ARPELS**
*signed Van Cleef & Arpels, no. 2 NY56806;
with signed box; estimated total diamond
weight: 5.05cts; dimensions: 1 1/8in.*

\$5,000 - 7,000

310
AN 18K GOLD SNAKE WRAP BRACELET
*gross weight approximately: 72 grams;
adjustable diameter: 2 3/4in.*

\$2,000 - 3,000



311



312



313

311

A DIAMOND AND 18K GOLD DOME RING

*estimated total diamond weight: 3.75cts;
size: 6 3/4*

\$1,500 - 2,000
To be sold without reserve

312

A DIAMOND AND 18K GOLD HINGED BANGLE

*estimated total diamond weight: 7.25cts;
gross weight approximately: 35 grams;
diameter: 2 1/8in.*

\$2,500 - 3,500

313

A DIAMOND AND 18K GOLD SNAKE COLLAR AND CUFF SET

*gross weight approximately: 94 grams;
necklace length: 15 1/2in.; cuff diameter: 2 3/8in.*

\$2,000 - 3,000



314



315



316

314
A PAIR OF DIAMOND AND 14K GOLD BANGLES

*estimated total diamond weight: 1.45cts;
gross weight approximately: 57 grams;
diameter: 2 1/4in.*

\$1,500 - 2,000
To be sold without reserve

315
A CULTURED PEARL, EMERALD, DIAMOND, 18K WHITE GOLD AND PLATINUM TASSEL NECKLACE

*pearls approximately: 2.6 to 3.5mm; length:
23 1/2in.*

\$1,500 - 2,000
To be sold without reserve

316
A DIAMOND, PLATINUM AND 18K GOLD HINGED CUFF

*estimated total diamond weight: 3.75cts;
gross weight approximately: 74 grams;
diameter: 2 1/4in.*

\$3,000 - 5,000



317



319



318



320

**317
AN EMERALD, DIAMOND AND 18K
GOLD NECKLACE, CHARLES KRYPELL**

signed Krypell; estimated total diamond weight: 2.00cts; gross weight approximately: 43 grams; length: 19 3/4in.

\$1,800 - 2,500
To be sold without reserve

**318
A PAIR OF DIAMOND AND GOLD EAR
CLIPS**

*estimated total diamond weight: 4.80cts;
length: 1 1/2in.*

\$2,000 - 3,000

**319
A TRIO OF RUBY, SAPPHIRE, EMERALD,
DIAMOND AND 18K GOLD RINGS**

*estimated total diamond weight: 6.50cts;
size: 6 1/2*

\$2,000 - 3,000

**320
AN EMERALD, DIAMOND AND 18K
GOLD DOUBLE SNAKE HINGED BANGLE
AND RING**

*gross weight approximately: 60 grams;
bangle diameter: 2 1/2in.; ring size: 2*

\$1,500 - 2,000
To be sold without reserve



321



323



322

321
**AN ENAMEL, DIAMOND AND 18K GOLD
TIGER BROOCH**
*gross weight approximately: 55 grams;
dimensions: 3 3/8 x 1 3/4in.*

\$1,500 - 2,000
To be sold without reserve

322
**AN EMERALD, DIAMOND AND GOLD
CONCEALED DIAL BRACELET
WRISTWATCH**
*watch stem deficient; dial signed Cellino;
gross weight approximately: 55 grams; case
diameter: 2 3/16in.*

\$1,500 - 2,000
To be sold without reserve

323
**A CULTURED PEARL, EMERALD,
DIAMOND AND GOLD CHOKER,
GIOVANE, ITALIAN**
*signed Giovane, Italy; estimated total
diamond weight: 6.70cts; length: 13in.*

\$4,000 - 6,000



324



325



326

324

A COLORED DIAMOND, RUBY AND ROSE GOLD SNAKE RING

total diamond weight: 3.97cts; size: 7 (colored diamonds untested for origin of color)

\$1,500 - 2,000

To be sold without reserve

325

A DIAMOND AND GEM-SET 18K GOLD BRACELET, ITALIAN

with Italian marks, gross weight approximately: 70 grams; length: 7 1/2in.

\$2,000 - 3,000

326

A SAPPHIRE, RUBY, EMERALD AND 14K BI-COLOR GOLD PENDANT/NECKLACE

gross weight approximately: 90 grams; length: 17in.

\$1,500 - 2,000

To be sold without reserve



327

327
**A DIAMOND, SAPPHIRE AND BI-COLOR
GOLD SNAKE BRACELET**

*gross weight approximately: 72 grams;
length: 7 1/2in.*

\$2,000 - 3,000



329

328
**A DIAMOND, PLATINUM AND 18K GOLD
TAURUS PENDANT/BROOCH,
DAVID WEBB**

*signed WEBB; estimated total diamond
weight: 3.35cts; gross weight approximately:
32 grams; diameter: 1 7/8in.*

\$1,500 - 2,000
To be sold without reserve



328

329
**A DIAMOND AND 18K BI-COLOR GOLD
BRACELET**

*total diamond weight: 3.37cts; gross weight
approximately: 76 grams; length: 7 3/4in.,
width: 1 7/16in.*

\$5,000 - 7,000



330



332



331



333

330
A PAIR OF DIAMOND AND 18K BI-COLOR GOLD HINGED BANGLES, ITALIAN
signed Italy; estimated total diamond weight: 0.95ct; gross weight approximately: 86 grams; diameter: 2 1/2in.
\$3,000 - 5,000

331
A DIAMOND AND BI-COLOR GOLD PENDANT/CLIP
estimated total diamond weight: 2.80cts; gross weight approximately: 49 grams; dimensions: 3 x 2 1/2in.
\$2,000 - 3,000

332
A PAIR OF DIAMOND AND 18K BI-COLOR GOLD EAR CLIPS
estimated total diamond weight: 2.05cts; dimensions: 1 x 3/4in.
\$1,500 - 2,000
To be sold without reserve

333
A DIAMOND AND 18K GOLD BRACELET
estimated total diamond weight: 1.70cts; gross weight approximately: 55 grams; length: 7 3/4in.
\$2,000 - 3,000



334

334
TWO PAIRS OF DIAMOND AND 18K BI-COLOR GOLD EAR CLIPS
estimated total diamond weight: 7.00cts; gross weight approximately: 49 grams; length: 1 1/8in.

\$2,500 - 3,000
 To be sold without reserve

336

336
A PAIR OF RUBY, DIAMOND AND 18K GOLD EAR CLIPS AND RING SET
estimated total diamond weight: 1.80cts; ear clip dimensions: 7/8 x 3/4in; ring size: 6 3/4in.

\$1,500 - 2,000
 To be sold without reserve

335

335
AN 18K GOLD STRAP WRISTWATCH, CORUM
quartz movement; cylinder watch with polished case, white dial and Corum logo at 12 o'clock, with curved lens crystal and oversize lugs, fitted makers strap with buckle clasp; strap, case, dial and movement signed; case no. 668774, ref. no. 130 330 56; case width: 33mm

\$1,500 - 2,500
 To be sold without reserve



337

**337
A DIAMOND, SAPPHIRE AND 18K GOLD
NECKLACE AND RING, CARRERA Y
CARRERA**

*signed CC, no.287677 and no. 57668; with
maker's marks; with two signed boxes; gross
weight approximately: 50 grams; necklace
length: 17in.*

\$1,500 - 2,500
To be sold without reserve



338



**338
A PAIR OF BLACK ONYX, DIAMOND AND
18K GOLD EAR CLIPS AND RING SET,
MEDICI**

*signed Medici; estimated total diamond
weight: 1.00ct; ear clips length: 7/8in; ring
size: 6 3/4*

\$1,500 - 2,000
To be sold without reserve



339

**339
A DIAMOND, STONE AND 18K BI-
COLOR GOLD RING**

*estimated total diamond weight: 2.30cts;
size: 7 1/2*

\$1,500 - 2,000
To be sold without reserve



340

**340
A DIAMOND AND 18K GOLD 'DOUBLE C'
CUFF, CARTIER**

*signed Cartier, no. 778377, with signed
box; gross weight approximately: 33 grams;
diameter: 2 1/4in.*

\$1,500 - 2,500
To be sold without reserve



341



342

Known for their enamel work and Art Nouveau style, the contemporary Barcelona jewelry firm Masriera carries on the family tradition created by Luis Masriera who revived the family business in 1900 with his extraordinary Art Nouveau jewels. Today the firm continues to implement the designs and techniques used years ago by Luis Masriera of plique-à-jour, champlevé, and Barcelona enameling.

341
A PLIQUE-À-JOUR, ENAMEL, DIAMOND, RUBY AND 18K GOLD BROOCH/ PENDANT WITH A PLIQUE-À-JOUR, ENAMEL, DIAMOND AND 18K GOLD RING, MASRIERA

both signed Masriera, no. G1937G and B7858B; each with a signed box and authenticity document; brooch/pendant dimensions: 2 7/8in; ring size: 6

\$2,500 - 3,500

342
A PLIQUE-À-JOUR ENAMEL, DIAMOND, SAPPHIRE AND 18K GOLD BROOCH/ PENDANT NECKLACE, MASRIERA

signed Masriera, no. C6279C; with signed box; dimensions: 20 3/4 x 2 1/4in.

\$3,000 - 5,000





343

343
A SAPPHIRE, DIAMOND, PLIQUE-À-JOUR ENAMEL AND GOLD DRAGON BROOCH TOGETHER WITH A TOURMALINE, ENAMEL AND GOLD RING, MASRIERA

both signed Masriera, no. G3109G and no. G1998G; each with authenticity document, one with signed box; brooch dimensions: 1 1/2 x 1 1/2in., ring size: 6 3/4

\$2,000 - 3,000

344

344
A DIAMOND AND 18K GOLD BROOCH/PENDANT ON ENAMEL AND GOLD CHAIN, MASRIERA

"stork" pendant/brooch signed Masriera, no. G4367G; with signed box and papers; chain length: 16in., pendant dimensions: 2 1/2 x 1 1/2in.

\$1,500 - 2,000
To be sold without reserve

345

345
A PAIR OF DIAMOND, PLIQUE-À-JOUR ENAMEL AND GOLD GRIFFON EAR PENDANTS TOGETHER WITH A DIAMOND, ENAMEL AND GOLD SNAKE RING, MASRIERA

both signed Masriera, no. G1999G and no. G1927G; with signed box; earring length: 2 3/4in., ring size: 6 3/4

\$2,000 - 3,000



346



347



348



346

A PLIQUE-À-JOUR ENAMEL, DIAMOND, CULTURED PEARL AND 18K GOLD "TREE" PENDANT/BROOCH AND RING, MASRIERA

both signed Masriera, no. C3072C and no. B9532B; with box and authenticity document; pendant dimensions: 2 x 1 1/2in., ring size: 7

\$1,500 - 2,500
To be sold without reserve

347

A PINK TOURMALINE, CULTURED PEARL, DIAMOND, ENAMEL AND 18K GOLD PENDANT ON CHAIN

length: 18 1/2in.

\$1,500 - 2,000
To be sold without reserve

348

A TOURMALINE, DIAMOND, PLIQUE-À-JOUR ENAMEL AND 18K GOLD GRIFFON RING TOGETHER WITH AN ENAMEL, GARNET, DIAMOND AND 18K GOLD RING, MASRIERA

both signed Masriera, no. G1268G and no. G4366G; both with box and authenticity document; sizes: 7 and 7 1/4

\$1,500 - 2,000
To be sold without reserve

END OF SALE

Bonhams

AUCTIONEERS SINCE 1793



Prints & Multiples

Los Angeles | May 7, 2019

**CONSIGNMENTS
NOW INVITED**

INQUIRIES
+1 (323) 436 5435
+1 (415) 503 3259
prints.us@bonhams.com
[bonhams.com/prints](https://www.bonhams.com/prints)

ANDY WARHOL (1928-1987)

Liz, 1964
Offset lithograph in colors
22 x 22in (55.9 x 55.9cm)
\$25,000 - 35,000

Bonhams

AUCTIONEERS SINCE 1793



California Jewels

Los Angeles | April 15, 2019

INQUIRIES

+1 (323) 436 5424

dana.ehrman@bonhams.com

emily.waterfall@bonhams.com

[bonhams.com/jewelry](https://www.bonhams.com/jewelry)

**AN 18 KARAT GOLD NECKLACE
AND PAIR OF EARCLIPS BY
BUCCELLATI, ITALIAN, CIRCA 1960
\$3,000 - 5,000**

Bonhams

AUCTIONEERS SINCE 1793



New York Jewels

New York | 1 May 2019

ENQUIRIES

+1 212 461 6526

brett.oconnor@bonhams.com

[bonhams.com/jewelry](https://www.bonhams.com/jewelry)

CONDITIONS OF SALE

The following Conditions of Sale, as amended by any published or posted notices or verbal announcements during the sale, constitute the entire terms and conditions on which property listed in the catalog shall be offered for sale or sold by Bonhams & Butterfields Auctioneers Corp. and any consignor of such property for whom we act as agent. If live online bidding is available for the subject auction, additional terms and conditions of sale relating to online bidding will apply; see www.bonhams.com/ WebTerms for the supplemental terms. As used herein, "Bonhams," "we" and "us" refer to Bonhams & Butterfields Auctioneers Corp.

1. As used herein, the term "bid price" means the price at which a lot is successfully knocked down to the purchaser. The term "purchase price" means the aggregate of (a) the bid price, (b) a PREMIUM retained by us and payable by the purchaser EQUAL TO 25% OF THE FIRST \$250,000 OF THE BID PRICE, 20% OF THE AMOUNT OF THE BID PRICE ABOVE \$250,000 UP TO AND INCLUDING \$4,000,000, AND 12.5% OF THE AMOUNT OF THE BID PRICE OVER \$4,000,000, and (c) unless the purchaser is exempt by law from the payment thereof, any Alabama, Arizona, California, Colorado, Connecticut, Florida, Georgia, Hawaii, Idaho, Illinois, Iowa, Indiana, Kentucky, Louisiana, Maine, Massachusetts, Michigan, Minnesota, Nevada, New Jersey, New York, North Carolina, Ohio, Pennsylvania, Rhode Island, Texas, Utah, Virginia, Washington, D.C., Washington state, Wisconsin, Wyoming or other state or local sales tax (or compensating use tax) and other applicable taxes. With regard to New York sales tax, please refer to the "Sales and Use Tax" section of these Conditions of Sale.

2. On the fall of the auctioneer's hammer, the highest bidder shall have purchased the offered lot in accordance and subject to compliance with all of the conditions set forth herein and (a) assumes full risk and responsibility therefor, (b) if requested will sign a confirmation of purchase, and (c) will pay the purchase price in full or such part as we may require for all lots purchased. No lot may be transferred. Any person placing a bid as agent on behalf of another (whether or not such person has disclosed that fact or the identity of the principal) may be jointly and severally liable with the principal under any contract resulting from the acceptance of a bid.

Unless otherwise agreed, payment in good funds is due and payable within five (5) business days following the auction sale. Whenever the purchaser pays only a part of the total purchase price for one or more lots purchased, we may apply such payments, in our sole discretion, to the lot or lots we choose. Payment will not be deemed made in full until we have collected good funds for all amounts due.

Payment for purchases may be made in or by (a) cash, (b) cashier's check or money order, (c) personal check with approved credit drawn on a U.S. bank, (d) wire transfer or other immediate bank transfer, or (e) Visa, MasterCard, American Express or Discover credit, charge or debit card. A processing fee will be assessed on any returned checks. Please note that the amount of cash notes and cash equivalents that can be accepted from a given purchaser may be limited.

To the fullest extent permitted by applicable law: The purchaser grants us a security interest in the property, and we may retain as collateral security for the purchaser's obligations to us, any property and all monies held or received by us for the account of the purchaser, in our possession. We also retain all rights of a secured party under the California Commercial Code. If the foregoing conditions or any other applicable conditions herein are not complied with, in addition to all other remedies available to us and the consignor by law, we may at our election: (a) hold the purchaser liable for the full purchase price and any late charges, collection costs, attorneys' fees and costs, expenses and incidental damages incurred by us or the

consignor arising out of the purchaser's breach; (b) cancel the sale, retaining as liquidated damages all payments made by the purchaser; and/or (c) cancel the sale and/or resell the purchased property, at public auction and/or by private sale, and in such event the purchaser shall be liable for the payment of all consequential damages, including any deficiencies or monetary losses, and all costs and expenses of such sale or sales, our commissions at our standard rates, all other charges due hereunder, all late charges, collection costs, attorneys' fees and costs, expenses and incidental damages. In addition, where two or more amounts are owed in respect of different transactions by the purchaser to us, to Bonhams 1793 Limited and/or to any of our other affiliates, subsidiaries or parent companies worldwide within the Bonhams Group, we reserve the right to apply any monies paid in respect of a transaction to discharge any amount owed by the purchaser. If all fees, commissions, premiums, bid prices and other sums due to us from the purchaser are not paid promptly as provided in these Conditions of Sale, we reserve the right to impose a finance charge equal to 1.5% per month (or, if lower, the maximum nonusurious rate of interest permitted by applicable law), on all amounts due to us beginning on the 31st day following the sale until payment is received, in addition to other remedies available to us by law.

3. We reserve the right to withdraw any property and to divide and combine lots at any time before such property's auction. Unless otherwise announced by the auctioneer at the time of sale, all bids are per lot as numbered in the catalog and no lots shall be divided or combined for sale.

4. We reserve the right to reject a bid from any bidder, to split any bidding increment, and to advance the bidding in any manner the auctioneer may decide. In the event of any dispute between bidders, or in the event the auctioneer doubts the validity of any bid, the auctioneer shall have sole and final discretion either to determine the successful bidder or to re-offer and resell the article in dispute. If any dispute arises after the sale, our sales records shall be conclusive in all respects.

5. If we are prevented by fire, theft or any other reason whatsoever from delivering any property to the purchaser or a sale otherwise cannot be completed, our liability shall be limited to the sum actually paid therefor by the purchaser and shall in no event include any compensatory, incidental or consequential damages.

6. If a lot is offered subject to a reserve, we may implement such reserve by bidding on behalf of the consignor, whether by opening bidding or continuing bidding in response to other bidders until reaching the reserve. If we have an interest in an offered lot and the proceeds therefrom other than our commissions, we may bid therefor to protect such interest. **CONSIGNORS ARE NOT ALLOWED TO BID ON THEIR OWN ITEMS.**

7. All statements contained in the catalog or in any bill of sale, condition report, invoice or elsewhere as to authorship, period, culture, source, origin, measurement, quality, rarity, provenance, importance, exhibition and literature of historical relevance, or physical condition **ARE QUALIFIED STATEMENTS OF OPINION AND NOT REPRESENTATIONS OR WARRANTIES.** No employee or agent of Bonhams is authorized to make on our behalf or on that of the consignor any representation or warranty, oral or written, with respect to any property.

8. All purchased property shall be removed from the premises at which the sale is conducted by the date(s) and time(s) set forth in the "Buyer's Guide" portion of this catalog. Property designated with a "W" and associated purchased lots, if not removed promptly following sale, will be transferred to an offsite warehouse at the purchaser's risk and expense, as set forth in more detail in the "Buyer's Guide." Purchased property that is permitted to remain

onsite at Bonhams' facility should be removed at the purchaser's expense not later than 5:00 p.m. Pacific Time five (5) business days following the date of the sale. If not so removed, a storage fee of \$5.00 per lot per day will be payable to us by the purchaser beginning at the close of the 21st day following the sale, and we may thereafter transfer such property to an offsite warehouse at the purchaser's risk and expense. Accounts must be settled in full before property will be released. Packing and handling of purchased lots are the responsibility of the purchaser. Bonhams can provide packing and shipping services for certain items as noted in the "Buyer's Guide" section of the catalog.

9. The copyright in the text of the catalog and the photographs, digital images and illustrations of lots in the catalog belong to Bonhams or its licensors. You will not reproduce or permit anyone else to reproduce such text, photographs, digital images or illustrations without our prior written consent.

10. These Conditions of Sale shall bind the successors and assigns of all bidders and purchasers and inure to the benefit of our successors and assigns. No waiver, amendment or modification of the terms hereof (other than posted notices or oral announcements during the sale) shall bind us unless specifically stated in writing and signed by us. If any part of these Conditions of Sale is for any reason invalid or unenforceable, the rest shall remain valid and enforceable.

11. These Conditions of Sale and the purchaser's and our respective rights and obligations hereunder are governed by the laws of the State of California. By bidding at an auction, each purchaser and bidder agrees to be bound by these Conditions of Sale. Any dispute, controversy or claim arising out of or relating to this agreement, or the breach, termination or validity thereof, brought by or against Bonhams (but not including claims brought against the consignor by the purchaser of lots consigned hereunder) shall be resolved by the procedures set forth below.

MEDIATION AND ARBITRATION PROCEDURES

(a) Within 30 days of written notice that there is a dispute, the parties or their authorized and empowered representatives shall meet by telephone and/or in person to mediate their differences. If the parties agree, a mutually acceptable mediator shall be selected and the parties will equally share such mediator's fees. The mediator shall be a retired judge or an attorney familiar with commercial law and trained in or qualified by experience in handling mediations. Any communications made during the mediation process shall not be admissible in any subsequent arbitration, mediation or judicial proceeding. All proceedings and any resolutions thereof shall be confidential, and the terms governing arbitration set forth in paragraph (c) below shall govern.

(b) If mediation does not resolve all disputes between the parties, or in any event no longer than 60 days after receipt of the written notice of dispute referred to above, the parties shall submit the dispute for binding arbitration before a single neutral arbitrator. Such arbitrator shall be a retired judge or an attorney familiar with commercial law and trained in or qualified by experience in handling arbitrations. Such arbitrator shall make all appropriate disclosures required by law. The arbitrator shall be drawn from a panel of a national arbitration service agreed to by the parties, and shall be selected as follows: (i) If the national arbitration service has specific rules or procedures, those rules or procedures shall be followed; (ii) If the national arbitration service does not have rules or procedures for the selection of an arbitrator, the arbitrator shall be an individual jointly agreed to by the parties. If the parties cannot agree on a national arbitration service, the arbitration shall be conducted by the American Arbitration Association, and the arbitrator shall be selected in accordance with the Rules of

CONDITIONS OF SALE - CONTINUED

the American Arbitration Association. The arbitrator's award shall be in writing and shall set forth findings of fact and legal conclusions.

(c) Unless otherwise agreed to by the parties or provided by the published rules of the national arbitration service:

(i) the arbitration shall occur within 60 days following the selection of the arbitrator;

(ii) the arbitration shall be conducted in the designated location, as follows: (A) in any case in which the subject auction by Bonhams took place or was scheduled to take place in the State of New York or Connecticut or the Commonwealth of Massachusetts, the arbitration shall take place in New York City, New York; (B) in all other cases, the arbitration shall take place in the city of San Francisco, California; and

(iii) discovery and the procedure for the arbitration shall be as follows:

(A) All arbitration proceedings shall be confidential;

(B) The parties shall submit written briefs to the arbitrator no later than 15 days before the arbitration commences;

(C) Discovery, if any, shall be limited as follows: (I) Requests for no more than 10 categories of documents, to be provided to the requesting party within 14 days of written request therefor; (II) No more than two (2) depositions per party, provided however, the deposition(s) are to be completed within one (1) day; (III) Compliance with the above shall be enforced by the arbitrator in accordance with California law;

(D) Each party shall have no longer than eight (8) hours to present its position. The entire hearing before the arbitrator shall not take longer than three (3) consecutive days;

(E) The award shall be made in writing no more than 30 days following the end of the proceeding. Judgment upon the award rendered by the arbitrator may be entered by any court having jurisdiction thereof.

To the fullest extent permitted by law, and except as required by applicable arbitration rules, each party shall bear its own attorneys' fees and costs in connection with the proceedings and shall share equally the fees and expenses of the arbitrator.

LIMITED RIGHT OF RESCISSION

If within one (1) year from the date of sale, the original purchaser (a) gives written notice to us alleging that the identification of Authorship (as defined below) of such lot as set forth in the **BOLD TYPE** heading of the catalog description of such lot (as amended by any saleroom notices or verbal announcements during the sale) is not substantially correct based on a fair reading of the catalog (including the terms of any glossary contained therein), and (b) within 10 days after such notice returns the lot to us in the same condition as at the time of sale, and (c) establishes the allegation in the notice to our satisfaction (including by providing one or more written opinions by recognized experts in the field, as we may reasonably require), then the sale of such lot will be rescinded and, unless we have already paid to the consignor monies owed him in connection with the sale, the original purchase price will be refunded.

If, prior to receiving such notice from the original purchaser alleging such defect, we have paid the consignor monies owed him in connection with the sale, we shall pay the original purchaser the amount of our commissions, any other sale proceeds to which we are entitled and applicable taxes received from the purchaser on the sale and make demand on the consignor to pay the balance of the original purchase price to the original purchaser. Should the consignor fail to pay such amount promptly, we may disclose the identity of the consignor and assign to the original purchaser our rights against the consignor with respect to the lot the sale of which is sought to be rescinded. Upon such disclosure and assignment, any liability of Bonhams as consignor's agent with respect to said lot shall automatically terminate.

The foregoing limited right of rescission is available to the original purchaser only and may not be assigned to or relied upon by any subsequent transferee of the property sold. The purchaser hereby accepts the benefit of the consignor's warranty of title and other representations and warranties made by the consignor for the purchaser's benefit. Nothing in this section shall be construed as an admission by us of any representation of fact, express or implied, obligation or responsibility with respect to any lot. **THE PURCHASER'S SOLE AND EXCLUSIVE**

REMEDY AGAINST BONHAMS FOR ANY REASON WHATSOEVER IS THE LIMITED RIGHT OF RESCISSION DESCRIBED IN THIS SECTION.

"Authorship" means only the identity of the creator, the period, culture and source or origin of the lot, as the case may be, as set forth in the **BOLD TYPE** heading of the print catalog entry. The right of rescission does not extend to: (a) works of art executed before 1870 (unless these works are determined to be counterfeits created since 1870), as this is a matter of current scholarly opinion which can change; (b) titles, descriptions, or other identification of offered lots, which information normally appears in lower case type below the **BOLD TYPE** heading identifying the Authorship; (c) Authorship of any lot where it was specifically mentioned that there exists a conflict of specialist or scholarly opinion regarding the Authorship of the lot at the time of sale; (d) Authorship of any lot which as of the date of sale was in accordance with the then generally-accepted opinion of scholars and specialists regarding the same; or (e) the identification of periods or dates of creation in catalog descriptions which may be proven inaccurate by means of scientific processes that are not generally accepted for use until after publication of the catalog in which the property is offered or that were unreasonably expensive or impractical to use at the time of such publication.

LIMITATION OF LIABILITY

EXCEPT AS EXPRESSLY PROVIDED ABOVE, ALL PROPERTY IS SOLD "AS IS." NEITHER BONHAMS NOR THE CONSIGNOR MAKES ANY REPRESENTATION OR WARRANTY, EXPRESS OR IMPLIED, AS TO THE MERCHANTABILITY, FITNESS OR CONDITION OF THE PROPERTY OR AS TO THE CORRECTNESS OF DESCRIPTION, GENUINENESS, ATTRIBUTION, PROVENANCE OR PERIOD OF THE PROPERTY OR AS TO WHETHER THE PURCHASER ACQUIRES ANY COPYRIGHTS OR OTHER INTELLECTUAL PROPERTY RIGHTS IN LOTS SOLD OR AS TO WHETHER A WORK OF ART IS SUBJECT TO THE ARTIST'S MORAL RIGHTS OR OTHER RESIDUAL RIGHTS OF THE ARTIST. THE PURCHASER EXPRESSLY ACKNOWLEDGES AND AGREES THAT IN NO EVENT SHALL BONHAMS BE LIABLE FOR ANY DAMAGES INCLUDING, WITHOUT LIMITATION, ANY COMPENSATORY, INCIDENTAL OR CONSEQUENTIAL DAMAGES.

SELLER'S GUIDE

SELLING AT AUCTION

Bonhams can help you every step of the way when you are ready to sell art, antiques and collectible items at auction. Our regional offices and representatives throughout the US are available to service all of your needs. Should you have any further questions, please visit our website at www.bonhams.com/us for more information or call our Client Services Department at +1 (323) 850 7500.

AUCTION ESTIMATES

The first step in the auction process is to determine the auction value of your property. Bonhams' world-renowned specialists will evaluate your special items at no charge and in complete confidence. You can obtain an auction estimate in many ways:

- Attend one of our Auction Evaluation Events held regularly at our galleries and in other major metropolitan areas. The updated schedule for Bonhams Auction Evaluation Events is available at www.bonhams.com/us.
- Call our Client Services Department to schedule a private appointment at one of our galleries. If you have a large collection, our specialists can travel, by appointment, to evaluate your property on site.
- Send clear photographs to us of each individual item, including item dimensions and other pertinent information with each picture. Photos should be sent to Bonhams' address in envelopes marked

as "photo auction estimate". Alternatively, you can submit your request using our online form at www.bonhams.com/us. Digital images may be attached to the form. Please limit your images to no more than five (5) per item.

CONSIGNING YOUR PROPERTY

After you receive an estimate, you may consign your property to us for sale in the next appropriate auction. Our staff assists you throughout the process, arranging transportation of your items to our galleries (at the consignor's expense), providing a detailed inventory of your consignment, and reporting the prices realized for each lot. We provide secure storage for your property in our warehouses and all items are insured throughout the auction process. You will receive payment for your property approximately 35 days after completion of sale.

Sales commissions vary with the potential auction value of the property and the particular auction in which the property is offered. Please call us for commission rates.

PROFESSIONAL APPRAISAL SERVICES

Bonhams' specialists conduct insurance and fair market value appraisals for private collectors, corporations, museums, fiduciaries and government entities on a daily basis. Insurance appraisals, used for insurance purposes, reflect the cost of replacing property in today's retail market. Fair market value appraisals are used for estate,

tax and family division purposes and reflect prices paid by a willing buyer to a willing seller.

When we conduct a private appraisal, our specialists will prepare a thorough inventory listing of all your appraised property by category. Valuations, complete descriptions and locations of items are included in the documentation.

Appraisal fees vary according to the nature of the collection, the amount of work involved, the travel distance, and whether the property is subsequently consigned for auction.

Our appraisers are available to help you anywhere and at any time. Please call our Client Services Department to schedule an appraisal.

ESTATE SERVICES

Since 1865, Bonhams has been serving the needs of fiduciaries – lawyers, trust officers, accountants and executors – in the disposition of large and small estates. Our services are specially designed to aid in the efficient appraisal and disposition of fine art, antiques, jewelry, and collectibles. We offer a full range of estate services, ranging from flexible financial terms to tailored accounting for heirs and their agents to world-class marketing and sales support.

For more information or to obtain a detailed Trust and Estates package, please visit our website at www.bonhams.com/us or contact our Client Services Department.

BUYER'S GUIDE

BIDDING & BUYING AT AUCTION

Whether you are an experienced bidder or an enthusiastic novice, auctions provide a stimulating atmosphere unlike any other. Bonhams previews and sales are free and open to the public. As you will find in these directions, bidding and buying at auction is easy and exciting. Should you have any further questions, please visit our website at www.bonhams.com or call our Client Services Department at +1 (323) 850 7500.

Catalogs

Before each auction we publish illustrated catalogs that include dates and times for previews and auctions. Our catalogs also provide descriptions and estimated values for each "lot." A lot may refer to a single item or to a group of items auctioned together. We offer our catalogs by subscription or by single copy. For information on subscribing to our catalogs, you may refer to the subscription form in this catalog, call our Client Services Department, or visit our website at www.bonhams.com/us.

Previews

Auction previews are your chance to inspect each lot prior to the auction. We encourage you to look closely and examine each object on which you may want to bid so that you will know as much as possible about it. Items are sold "as is" and with all faults; illustrations in our catalogs, website and other materials are provided for identification only. At the previews, our staff is always available to answer your questions and guide you through the auction process. Condition reports may be available upon request.

Estimates

Bonhams catalogs include estimates for each lot, exclusive of buyer's premium and tax. The estimates are provided as an approximate guide to current market value and should not be interpreted as a representation or prediction of actual selling prices. They are determined well in advance of a sale and are subject to revision. Please contact us should you have any questions about value estimates.

Reserves

All lots in a catalog are subject to a reserve unless otherwise indicated. The reserve is the minimum price that the seller is willing to accept for a lot. This amount is confidential and does not exceed the low estimated value.

BIDDING AT AUCTION

At Bonhams, you can bid in many ways: in person, via absentee bid, over the phone, or via Bonhams' online bidding facility. Absentee bids can be submitted in person, online, via fax or via email.

A valid Bonhams client account is required to participate in bidding activity. You can obtain registration information online, at the reception desk or by calling our Client Services Department.

By bidding at auction, whether in person or by agent, by absentee bid, telephone, online or other means, the buyer or bidder agrees to be bound by the Conditions of Sale.

Lots are auctioned in consecutive numerical order as they appear in the catalog. Bidding normally begins below the low estimate. The auctioneer will accept bids from interested parties present in the saleroom, from telephone bidders, and from absentee bidders who have left written bids in advance of the sale. The auctioneer may also execute bids on behalf of the consignor up to the amount of the reserve, but never above it.

We assume no responsibility for failure to execute bids for any reason whatsoever.

In Person

If you are planning to bid at auction, you will need to register at the reception desk in order to receive a numbered bid card. To place a bid, hold up your card so that the auctioneer can clearly see it. Decide on the maximum amount that you wish to pay, exclusive of buyer's premium and tax, and continue bidding until your bid prevails or you reach your limit. If you are the successful bidder on a lot, the auctioneer will acknowledge your paddle number and bid amount.

Absentee Bids

As a service to those wishing to place bids, we may at our discretion accept bids without charge in advance of sale by telephone, by facsimile or in writing on bidding forms available from us. "Buy" bids will not be accepted; all bids must state the highest bid price the bidder is willing to pay. Our auction staff will try to bid just as you would, with the goal of obtaining the

item at the lowest bid price possible. In the event identical bids are submitted, the earliest bid submitted will take precedence. Absentee bids shall be executed in competition with other absentee bids, any applicable reserve, and bids from other auction participants. A friend or agent may place bids on your behalf, provided that we have received your written authorization prior to the sale. Absentee bid forms are available in our catalogs, online at www.bonhams.com/us, and at our San Francisco, Los Angeles and New York galleries.

By Telephone

Under special circumstances, we can arrange for you to bid by telephone. To arrange for a telephone bid, please contact our Client Services Department a minimum of 24 hours prior to the sale.

Online

Web users may place absentee bids online from anywhere in the world. To bid online, please visit our website at www.bonhams.com/us.

We are pleased to make our live online bidding facility available to bidders in this sale.

Additional terms and conditions of sale relating to online bidding will apply. Please see www.bonhams.com/25328 or contact the Client Services Department to obtain information and learn how you can register and bid online in this sale.

Bid Increments

Bonhams generally uses the following increment multiples as bidding progresses:

\$50-200	by \$10s
\$200-500	by \$20/50/80s
\$500-1,000	by \$50s
\$1,000-2,000	by \$100s
\$2,000-5,000	by \$200/500/800s
\$5,000-10,000	by \$500s
\$10,000-20,000	by \$1,000s
\$20,000-50,000	by \$2,000/5,000/8,000s
\$50,000-100,000	by \$5,000s
\$100,000-200,000	by \$10,000s
above \$200,000	at auctioneer's discretion

The auctioneer may split or reject any bid at any time at his or her discretion as outlined in the Conditions of Sale.

Currency Converter

Solely for the convenience of bidders, a currency converter may be provided at Bonhams sales. The rates quoted for conversion of other currencies to U.S. Dollars are indications only and should not be relied upon by a bidder, and neither Bonhams nor its agents shall be responsible for any errors or omissions in the operation or accuracy of the currency converter.

Buyer's Premium

A buyer's premium is added to the winning bid price of each individual lot purchased, at the rates set forth in the Conditions of Sale. The winning bid price plus the premium constitute the purchase price for the lot. Applicable sales taxes are computed based on this figure, and the total becomes your final purchase price.

Unless specifically illustrated and noted, fine art frames are not included in the estimate or purchase price. Bonhams accepts no liability for damage or loss to frames during storage or shipment.

All sales are final and subject to the Conditions of Sale found in our catalogs, on our website, and available at the reception desk.

Payment

All buyers are asked to pay and pick up by 3pm on the business day following the auction. Payment may be made to Bonhams by cash, checks drawn on a U.S. bank, money order, wire transfer, or by Visa, MasterCard, American Express or Discover credit or charge card or debit card. All items must be paid for within 5 business days of the sale. Please note that payment by personal or business check may result in property not being released until purchase funds clear our bank.

Sales Tax

Residents of states listed in Paragraph 1 of the Conditions of Sale must pay applicable sales tax. Other state or local taxes (or compensation use taxes) may apply. Sales tax will be automatically added to the invoice unless a valid resale number has been furnished or the property is shipped via common carrier to destinations outside the states listed in

the Conditions of Sale. If you wish to use your resale license please contact Cashiers for our form.

Bonhams can accommodate shipping for certain items. Please contact our Cashiers Department for more information or to obtain a quote. Refer to Conditions of Sale for special terms governing the shipment of Arms and Wine. Shipments are made during weekday business hours up to four weeks after payment is received. Carriers are not permitted to deliver to P.O. Boxes.

International buyers are responsible for all import/export customs duties and taxes. An invoice stating the actual purchase price(s) will accompany all international purchases.

Simultaneous sale property collection notice:

If this sale previews in multiple cities, please see the title page for details regarding final location of property for collection.

Auction Results

Auction results are usually available on the next business day following the sale or online at www.bonhams.com/us.

Bonhams Specialist Departments

19th Century Paintings London

Charles O' Brien
+44 20 7468 8360
New York
Madalina Lazen
+1 212 644 9108

20th Century British Art London

Matthew Bradbury
+44 20 7468 8295

20th Century Fine Art San Francisco

Sonja Moro
+1 415 503 3412

Aboriginal Art

Australia
Francesca Cavazzini
+61 2 8412 2222

African, Oceanic & Pre-Columbian Art Los Angeles

Fredric W. Backlar
+1 323 436 5416 •

American Paintings New York

Jennifer Jacobsen
+1 917 206 1699
Elizabeth Goodridge
+1 917 206 1621

Antiquities

London
Francesca Hickin
+44 20 7468 8226

Antique Arms & Armour London

David Williams
+44 20 7393 3807

Art Collections, Estates & Valuations

London
Harvey Cammell
+44 (0) 20 7468 8340

New York
Sherri Cohen
+1 917 206 1671

Los Angeles
Leslie Wright
+1 323 436 5408
Joseph Francaviglia
+1 323 436 5443

Lydia Ganley
+1 323 436 4496

San Francisco
Victoria Richardson
+1 415 503 3207
Celeste Smith
+1 415 503 3214

Australian Art Australia

Merryn Schriever
+61 2 8412 2222
Alex Clark
+61 3 8640 4088

Australian Colonial Furniture and Australiana

+61 2 8412 2222

Books, Maps & Manuscripts London

Matthew Haley
+44 20 7393 3817
New York
Ian Ehling
+1 212 644 9094
Darren Sutherland
+1 212 461 6531

Los Angeles
Catherine Williamson
+1 323 436 5442

San Francisco
Adam Stackhouse
+1 415 503 3266

British & European Glass London

John Sandon
+44 20 7468 8244

British Ceramics

London
John Sandon
+44 20 7468 8244

California & Western Paintings & Sculpture

Los Angeles
Scot Levitt
+1 323 436 5425
Kathy Wong
+1 323 436 5415
San Francisco
Aaron Bastian
+1 415 503 3241

Carpets

London
Helena Gumley-Mason
+44 20 8393 2615

Chinese & Asian Art

London
Asaph Hyman
+44 20 7468 5888

New York
Bruce MacLaren,
+1 917 206 1677

Ming Hua
+1 646 837 8132
Harold Yeo
+1 917 206 1628 •

Los Angeles
Rachel Du
+1 323 436 5587

San Francisco
Dessa Goddard
+1 415 503 3333

Henry Kleinhenz
+1 415 503 3336
Daniel Hersksee
+1 415 503 3271

Lingling Shang
+1 415 503 3207 •
Amelia Chao
+1 415 503 3397

Hong Kong

Xibo Wang,
+852 3607 0010
Australia
Yvett Klein,
+61 2 8412 2231

Clocks

London
James Stratton
+44 20 7468 8364
New York
Jonathan Snellenburg
+1 212 461 6530

Coins & Medals

London
John Millensted
+44 20 7393 3914
Los Angeles
Paul Song
+1 323 436 5455

Entertainment Memorabilia

London
Katherine Schofield
+44 20 7393 3871
Los Angeles
Catherine Williamson
+1 323 436 5442
Dana Hawkes
+1 978 283 1518

European Ceramics London

Sebastian Kuhn
+44 20 7468 8384

European Paintings London

Charles O' Brien
+44 20 7468 8360

New York
Madalina Lazen
+1 212 644 9108

Los Angeles
Mark Fisher
+1 323 436 5488
Rocco Rich
+1 323 436 5410

European Sculptures & Works of Art

London
Michael Lake
+44 20 8963 6813

Furniture and Decorative Art London

Thomas Moore
+44 20 8963 2816

Los Angeles
Angela Past
+1 323 436 5422
Anna Hicks
+1 323 436 5463

Greek Art

London
Anastasia Orfanidou
+44 20 7468 8356

Golf Sporting Memorabilia

Edinburgh
Kevin McGimpsey
+44 131 240 2296
Hamish Wilson
+44 131 240 0916

Irish Art

London
Penny Day
+44 20 7468 8366

Impressionist & Modern Art

London
India Phillips
+44 20 7468 8328
New York
Caitlyn Pickens
+1 212 644 9135
Los Angeles
Kathy Wong
+1 323 436 5415

Indian, Himalayan & Southeast Asian Art

New York
Mark Rasmussen
+1 917 206 1688
Hong Kong
Edward Wilkinson
+852 2918 4321

Islamic & Indian Art London

Oliver White
+44 20 7468 8303

Japanese Art London

Suzannah Yip
+44 20 7468 8368

New York
Jeff Olson
+1 212 461 6516

Jewellery

London
Jean Ghika
+44 20 7468 8282

Emily Barber
+44 20 7468 8284

New York
Brett O'Connor
+1 212 461 6525

Caroline Morrissey
+1 212 644 9046
Camille Barbier
+1 212 644 9035

Los Angeles
Dana Ehrman
+1 323 436 5407

Emily Waterfall
+1 323 436 5426
San Francisco
Shannon Beck
+1 415 503 3306

Hong Kong
Paul Redmayne
+852 3607 0006

Marine Art

London
Veronique Scorer
+44 20 7393 3962

Mechanical Music
London
Jon Baddeley
+44 20 7393 3872

**Modern & Contemporary
African Art**
London
Giles Peppiatt
+ 44 20 7468 8355
New York
Hayley Grundy
+1 917 206 1624

**Modern & Contemporary
Middle Eastern Art**
London
Nima Sagharchi
+44 20 7468 8342

**Modern & Contemporary
South Asian Art**
London
Tahmina Ghaffar
+44 207 468 8382

**Modern Decorative
Art + Design**
London
Mark Oliver
+44 20 7393 3856
New York
Benjamin Walker
+1 212 710 1306
Dan Tolson
+1 917 206 1611
Los Angeles
Jason Stein
+1 323 436 5466

Motor Cars
London
Tim Schofield
+44 20 7468 5804
New York
Rupert Banner
+1 212 461 6515
Eric Minoff
+1 917 206 1630
Evan Ide
+1 917 340 4657
Los Angeles
Jakob Greisen
+1 415 503 3284
Michael Caimano
+1 929 666 2243
San Francisco
Mark Osborne
+1 415 503 3353
Europe
Philip Kantor
+32 476 879 471

Automobilia
London
Toby Wilson
+44 20 8963 2842
Adrian Pipiros
+44 20 8963 2840

Motorcycles
London
Ben Walker
+44 20 8963 2819
James Stensel
+44 20 8963 2818
Los Angeles
Craig Mallery
+1 323 436 5470

Museum Services
San Francisco
Laura King Pfaff
+1 415 503 3210

Native American Art
San Francisco
Ingmars Lindbergs
+1 415 503 3393

Natural History
Los Angeles
Claudia Florian
+1 323 436 5437
+1 310 469 8567 •
Thomas E. Lindgren
+1 310 469 8567 •

Old Master Pictures
London
Andrew Mckenzie
+44 20 7468 8261
Los Angeles
Mark Fisher
+1 323 436 5488

Orientalist Art
London
Charles O'Brien
+44 20 7468 8360

Photography
New York
Laura Paterson
+1 917 206 1653
Los Angeles & San Francisco
Morisa Rosenberg
+1 323 436 5435
+1 415 503 3259

**Post-War and
Contemporary Art**
London
Ralph Taylor
+44 20 7447 7403
New York
Muys Sniijders,
+ 212 644 9020
Jeremy Goldsmith,
+ 1 917 206 1656
Jacqueline Towers-Perkins,
+1 212 644 9039
Lisa De Simone,
+1 917 206 1607
Los Angeles
Sharon Squires
+1 323 436 5404
Laura Bjorstad
+1 323 436 5446

Prints and Multiples
London
Lucia Tro Santafe
+44 20 7468 8262
New York
Deborah Ripley
+1 212 644 9059
Los Angeles
Morisa Rosenberg
+1 323 447 9374

Russian Art
London
Daria Khristova
+44 20 7468 8334
New York
Yelena Harbick
+1 212 644 9136

Scientific Instruments
London
Jon Baddeley
+44 20 7393 3872
New York
Jonathan Snellenburg
+1 212 461 6530

Scottish Pictures
Edinburgh
Chris Brickley
+44 131 240 2297

Silver & Gold Boxes
London
Ellis Finch
+44 20 7393 3973

Sporting Guns
London
Patrick Hawes
+44 20 7393 3815

Space History
San Francisco
Adam Stackhouse
+1 415 503 3266

Travel Pictures
London
Veronique Scorer
+44 20 7393 3962

**Watches &
Wristwatches**
London
Jonathan Darracott
+44 20 7447 7412
New York
Jonathan Snellenburg
+1 212 461 6530
Hong Kong
Tim Bourne
+852 3607 0021

Whisky
Edinburgh
Martin Green
+44 131 225 2266
Hong Kong
Daniel Lam
+852 2918 4321

Wine
London
Richard Harvey
+44 20 7468 5811
San Francisco
Christine Ballard
+1 415 503 3221
Hong Kong
Daniel Lam
+852 2918 4321

Client Services Departments

U.S.A.

San Francisco
(415) 861 7500
(415) 861 8951 fax
Monday - Friday, 9am to 5pm

Los Angeles
(323) 850 7500
(323) 850 6090 fax
Monday - Friday, 9am to 5pm

New York
(212) 644 9001
(212) 644 9009 fax
Monday - Friday, 9am to 5pm

Toll Free
(800) 223 2854

U.K.

Monday to Friday 8.30 to 6.00
+44 (0) 20 7447 7447

Bids

+44 (0) 20 7447 7447
+44 (0) 20 7447 7401 fax
To bid via the internet please
visit bonhams.com

• Indicates independent contractor

Bonhams Global Network

International Salerooms

London

101 New Bond Street
London W1S 1SR
+44 20 7447 7447
+44 20 7447 7400 fax

New York

580 Madison Avenue
New York, NY
10022
+1 (212) 644 9001
+1 (212) 644 9007 fax

Hong Kong

Suite 2001
One Pacific Place
88 Queensway
Admiralty
Hong Kong
+852 2918 4321
+852 2918 4320 fax

London

Montpelier Street London
SW7 1HH
+44 20 7393 3900
+44 20 7393 3905 fax

Offices and Associated Companies

AFRICA

Nigeria

Neil Coventry
+234 (0)8110 033 792
+27 (0)7611 20171
neil.coventry@bonhams.com

South Africa - Johannesburg

Penny Culverwell
+27 (0)71 342 2670
penny.culverwell@bonhams.com

AUSTRALIA

Sydney

97-99 Queen Street,
Woollahra, NSW 2025
Australia
+61 (0) 2 8412 2222
+61 (0) 2 9475 4110 fax
info.aus@bonhams.com

Melbourne

Como House
Como Avenue
South Yarra
Melbourne VIC 3141
Australia
+61 (0) 3 8640 4088
+61 (0) 2 9475 4110 fax
info.aus@bonhams.com

ASIA

Beijing

Jessica Zhang
Suite 511
Chang An Club
10 East Chang An
Avenue
Beijing 100006
+86(0) 10 6528 0922
+86(0) 10 6528 0933
fax
beijing@bonhams.com

Singapore

Bernadette Rankine
11th Floor, Wisma Atria
435 Orchard Road
Singapore 238877
+65 (0) 6701 8038
+65 (0) 6701 8001 fax
bernadette.rankine@bonhams.com

Taiwan

37th Floor, Taipei 101
Tower
No. 7 Xinyi Road,
Section 5
Taipei, 100
+886 2 8758 2898
+886 2 8758 2897 fax
taiwan@bonhams.com

EUROPE

Austria

Thomas Kamm
+49 (0) 89 2420 5812
austria@bonhams.com

Belgium

Boulevard
Saint-Michel 101
1040 Brussels
+32 (0) 2 736 5076
belgium@bonhams.com

France

4 rue de la Paix
75002 Paris
+33 (0) 1 42 61 10 10
paris@bonhams.com

Germany - Cologne

Katharina Schmid
+49 (0) 221 9865 3419
+49 (0) 157 9234 6717
cologne@bonhams.com

Germany - Hamburg

Marie Becker Lingenthal
+49 (0) 17 4236 0022
hamburg@bonhams.com

Germany - Munich

Maximilianstrasse 52
80538 Munich
+49 (0) 89 2420 5812
munich@bonhams.com

Germany - Stuttgart

Neue Brücke 2
New Bridge Offices
70173 Stuttgart
+49 (0) 711 2195 2640
+49 (0) 157 9234 6717
stuttgart@bonhams.com

Greece

7 Neofytou Vamva
Street
Athens 10674
+30 (0) 210 3636 404
athens@bonhams.com

Ireland

31 Molesworth Street
Dublin 2
+353 (0) 1 602 0990
ireland@bonhams.com

Italy - Milan

Via Boccaccio 22
20123 Milano
+39 0 2 4953 9020
milan@bonhams.com

Italy - Rome

Via Sicilia 50
00187 Roma
+39 06 485 900
rome@bonhams.com

The Netherlands

De Lairessestraat 154
1075 HL Amsterdam
+31 (0) 20 67 09 701
amsterdam@bonhams.com

Portugal

Rua Bartolomeu Dias
nº160. 1º
Belem
1400-031 Lisbon
+351 218 293 291
portugal@bonhams.com

Spain - Barcelona

Teresa Ybarra
+34 930 156 686
+34 680 347 606
barcelona@bonhams.com

Spain - Madrid

Núñez de Balboa no
4-1C
28001 Madrid
+34 915 78 17 27
madrid@bonhams.com

Switzerland - Geneva

Rue Etienne-Dumont 10
1204 Geneva
+41 (0) 22 300 3160
geneva@bonhams.com

Switzerland - Zurich

Andrea Bodmer
Dreikönigstrasse 31a
8002 Zürich
+41 44 281 9535
zurich@bonhams.com

NORTH AMERICA

USA

Representatives:
Arizona
Terri Adrian-Hardy
+1 (602) 859 1843
arizona@bonhams.com

California Central Valley

David Daniel
+1 (916) 364 1645
sacramento@bonhams.com

California Palm Springs

Brooke Sivo
+1 (760) 350 4255
palmsprings@bonhams.com

California San Diego

Brooke Sivo
+1 (760) 567 1744
sandiego@bonhams.com

Colorado

Lance Vigil
+1 (720) 355 3737
colorado@bonhams.com

Florida

April Matteini
+1 (305) 978 2459
Miami@bonhams.com
Alexis Butler
+1 (305) 878 5366
Miami@bonhams.com

Georgia

Mary Moore Bethea
+1 (404) 842 1500
georgia@bonhams.com

Illinois & Midwest

Natalie B. Waechter
+1 (773) 267 3300
chicago@bonhams.com

Edinburgh

22 Queen Street
Edinburgh
EH2 1JX
+44 131 225 2266
+44 131 220 2547 fax

Los Angeles

7601 W. Sunset Boulevard
Los Angeles
CA 90046
+1 (323) 850 7500
+1 (323) 850 6090 fax

San Francisco

220 San Bruno Avenue
San Francisco
CA 94103
+1 (415) 861 7500
+1 (415) 861 8951 fax

UNITED KINGDOM**Massachusetts**

Amy Corcoran
+1 (617) 742 0909
boston@bonhams.com

Nevada

David Daniel
+1 (775) 831 0330
nevada@bonhams.com

New Mexico

Terri Adrian-Hardy
+1 (602) 859 1843
newmexico@bonhams.com

Oregon

Sheryl Acheson
+1 (971) 727 7797
oregon@bonhams.com

Texas – Dallas

Mary Holm
+1 (214) 557 2716
dallas@bonhams.com

Texas – Houston

Lindsay Davis
+1 (713) 855 7452
texas@bonhams.com

Virginia

Gertraud Hechl
+1 (202) 422 2733
virginia@bonhams.com

Washington

Heather O'Mahony
+1 (206) 566 3913
seattle@bonhams.com

**Washington DC
Mid-Atlantic Region**

Gertraud Hechl
+1 (202) 422 2733
washingtonDC@bonhams.com

Canada**Toronto, Ontario**

Kristin Kearney
340 King St East
2nd Floor, Office 213
Toronto ON
M5A 1K8
+1 (416) 462 9004
info.ca@bonhams.com

Montreal, Quebec

David Kelsey
+1 (514) 894 1138
info.ca@bonhams.com

MIDDLE EAST**Israel**

Joslyne Halibard
+972 (0)54 553 5337
joslyne.halibard@bonhams.com

SOUTH AMERICA**Brazil**

+55 11 3031 4444
+55 11 3031 4444
fax

South East England**Guildford**

Millmead,
Guildford,
Surrey GU2 4BE
+44 1483 504 030
+44 1483 450 205
fax

Isle of Wight

+44 1273 220 000

Representative:

Brighton & Hove
Tim Squire-Sanders
+44 1273 220 000

West Sussex

+44 (0) 1273 220 000

South West England**Bath**

Queen Square House
Charlotte Street
Bath BA1 2LL
+44 1225 788 988
+44 1225 446 675
fax

Cornwall – Truro

36 Lemon Street
Truro
Cornwall
TR1 2NR
+44 1872 250 170
+44 1872 250 179
fax

Exeter

The Lodge
Southernhay West
Exeter, Devon
EX1 1JG
+44 1392 425 264
+44 1392 494 561
fax

Tetbury

Eight Bells House
14 Church Street
Tetbury
Gloucestershire
GL8 8JG
+44 1666 502 200
+44 1666 505 107
fax

Representatives:

Dorset
Bill Allan
+44 1935 815 271

East Anglia and Bury St. Edmunds

Michael Steel
+44 1284 716 190

Norfolk

The Market Place
Reepham
Norfolk NR10 4JJ
+44 1603 871 443
+44 1603 872 973
fax

Midlands**Knowle**

The Old House
Station Road
Knowle, Solihull
West Midlands
B93 0HT
+44 1564 776 151
+44 1564 778 069
fax

Oxford

Banbury Road
Shipton on Cherwell
Kidlington OX5 1JH
+44 1865 853 640
+44 1865 372 722
fax

Yorkshire & North East England**Leeds**

The West Wing
Bowcliffe Hall
Bramham
Leeds
LS23 6LP
+44 113 234 5755
+44 113 244 3910
fax

North West England**Chester**

2 St Johns Court,
Vicars Lane,
Chester,
CH1 1QE
+44 1244 313 936
+44 1244 340 028
fax

Manchester

The Stables
213 Ashley Road
Hale WA15 9TB
+44 161 927 3822
+44 161 927 3824
fax

Channel Islands**Jersey**

La Chasse
La Rue de la Vallee
St Mary
Jersey JE3 3DL
+44 1534 722 441
+44 1534 759 354
fax

Representative:

Guernsey
+44 1481 722 448

Scotland**Bonhams West of Scotland**

Kirkhill House
Broom Road East
Newton Mearns
Glasgow
G77 5LL
+44 141 223 8866

Wales

Representatives:

Cardiff
Jeff Muse
+44 2920 727 980

Auction Registration Form

(Attendee / Absentee / Online / Telephone Bidding)

Please circle your bidding method above.

--	--	--	--

Paddle number (for office use only)

General Notice: This sale will be conducted in accordance with Bonhams Conditions of Sale, and your bidding and buying at the sale will be governed by such terms and conditions. Please read the Conditions of Sale in conjunction with the Buyer's Guide relating to this sale and other published notices and terms relating to bidding. Payment by personal or business check may result in your property not being released until purchase funds clear our bank. Checks must be drawn on a U.S. bank.

Notice to Absentee Bidders: In the table below, please provide details of the lots on which you wish to place bids at least 24 hours prior to the sale. Bids will be rounded down to the nearest increment. Please refer to the Buyer's Guide in the catalog for further information relating to instructions to Bonhams to execute absentee bids on your behalf. Bonhams will endeavor to execute bids on your behalf but will not be liable for any errors or non-executed bids.

Notice to First Time Bidders: New clients are requested to provide photographic proof of ID - passport, driving license, ID card, together with proof of address - utility bill, bank or credit card statement etc. Corporate clients should also provide a copy of their articles of association / company registration documents, together with a letter authorizing the individual to bid on the company's behalf. Failure to provide this may result in your bids not being processed. For higher value lots you may also be asked to provide a bankers reference.

Notice to online bidders; If you have forgotten your username and password for www.bonhams.com, please contact Client Services.

If successful

- I will collect the purchases myself
- Please contact me with a shipping quote (if applicable)
- I will arrange a third party to collect my purchase(s)

Please email or fax the completed Registration Form and requested information to:

Bonhams Client Services Department
7601 W. Sunset Blvd
Los Angeles, California 90046
Tel +1 (323) 850 7500
Fax +1 (323) 850 6090
bids.us@bonhams.com

Bonhams

Sale title: California Jewels		Sale date: Tuesday March 5, 2019	
Sale no. 25328		Sale venue: Los Angeles	
General Bid Increments:			
\$10 - 200by 10s		\$10,000 - 20,000by 1,000s	
\$200 - 500by 20 / 50 / 80s		\$20,000 - 50,000by 2,000 / 5,000 / 8,000s	
\$500 - 1,000by 50s		\$50,000 - 100,000by 5,000s	
\$1,000 - 2,000by 100s		\$100,000 - 200,000by 10,000s	
\$2,000 - 5,000by 200 / 500 / 800s		above \$200,000at the auctioneer's discretion	
\$5,000 - 10,000by 500s		The auctioneer has discretion to split any bid at any time.	
Customer Number		Title	
First Name		Last Name	
Company name (to be invoiced if applicable)			
Address			
City		County / State	
Post / Zip code		Country	
Telephone mobile		Telephone daytime	
Telephone evening		Fax	
Telephone bidders: indicate primary and secondary contact numbers by writing ① or ② next to the telephone number.			
E-mail (in capitals) _____			
By providing your email address above, you authorize Bonhams to send you marketing materials and news concerning Bonhams and partner organizations. Bonhams does not sell or trade email addresses.			
I am registering to bid as a private client <input type="checkbox"/>		I am registering to bid as a trade client <input type="checkbox"/>	
Resale: please enter your resale license number here _____ We may contact you for additional information.			

SHIPPING	
Shipping Address (if different than above):	
Address: _____	Country: _____
City: _____	Post/ZIP code: _____

Please note that all telephone calls are recorded.

Type of bid (A-Absentee, T-Telephone)	Lot no.	Brief description (In the event of any discrepancy, lot number and not lot description will govern.) If you are bidding online there is no need to complete this section.	MAX bid in US\$ (excluding premium and applicable tax) Emergency bid for telephone bidders only*

You instruct us to execute each absentee bid up to the corresponding bid amount indicated above.

* Emergency Bid: A maximum bid (exclusive of Buyer's Premium and tax) to be executed by Bonhams only if we are unable to contact you by telephone or should the connection be lost during bidding.

BY SIGNING THIS FORM YOU AGREE THAT YOU HAVE READ AND UNDERSTAND OUR CONDITIONS OF SALE AND SHALL BE LEGALLY BOUND BY THEM, AND YOU AGREE TO PAY THE BUYER'S PREMIUM, ANY APPLICABLE TAXES, AND ANY OTHER CHARGES MENTIONED IN THE BUYER'S GUIDE OR CONDITIONS OF SALE. THIS AFFECTS YOUR LEGAL RIGHTS.	
Your signature: _____	Date: _____





Bonhams
7601 W. Sunset Boulevard
Los Angeles, California 90046

+1 323 850 7500
bonhams.com

AUCTIONEERS SINCE 1793